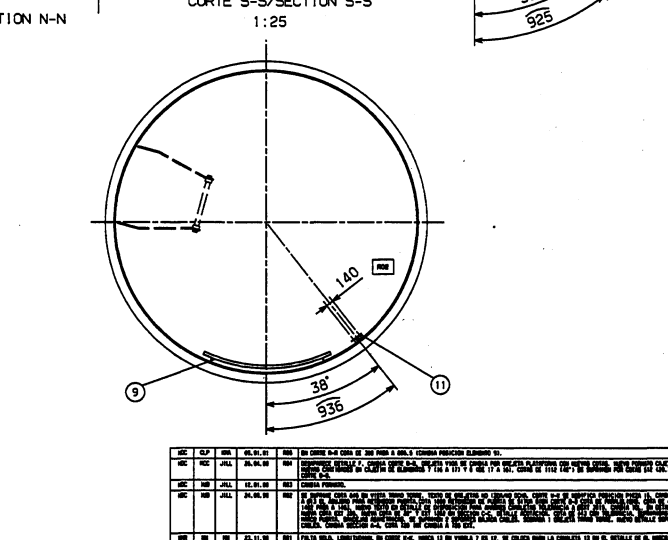
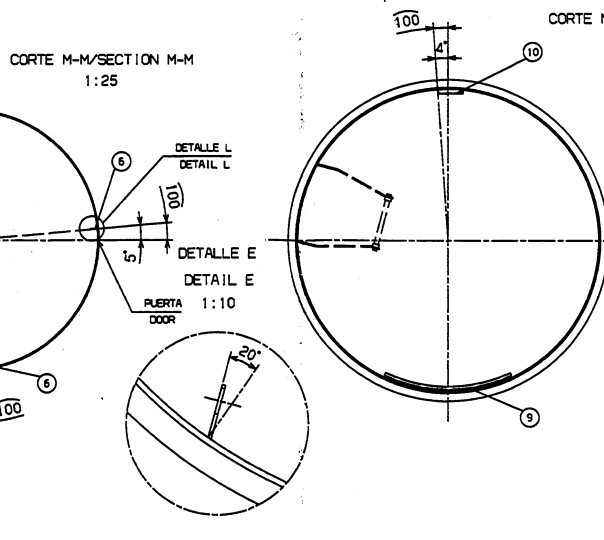
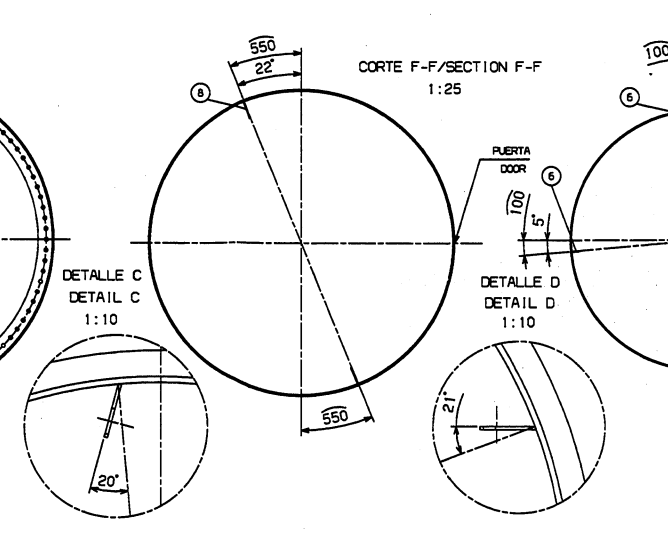
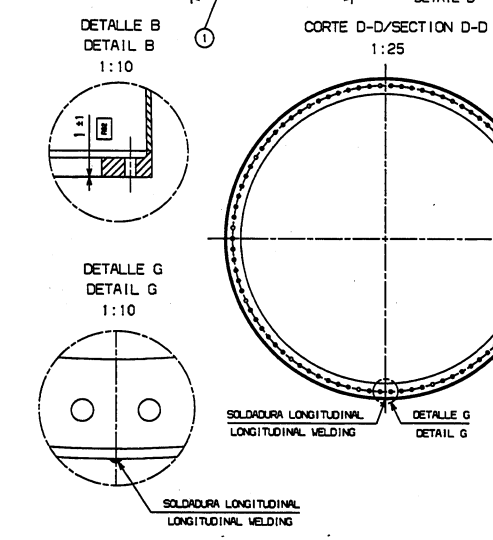
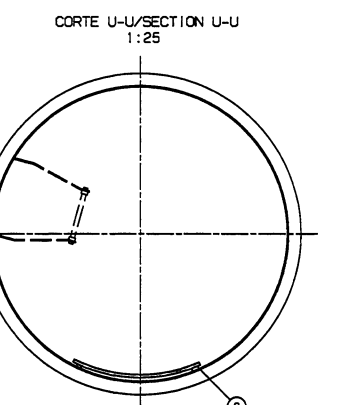
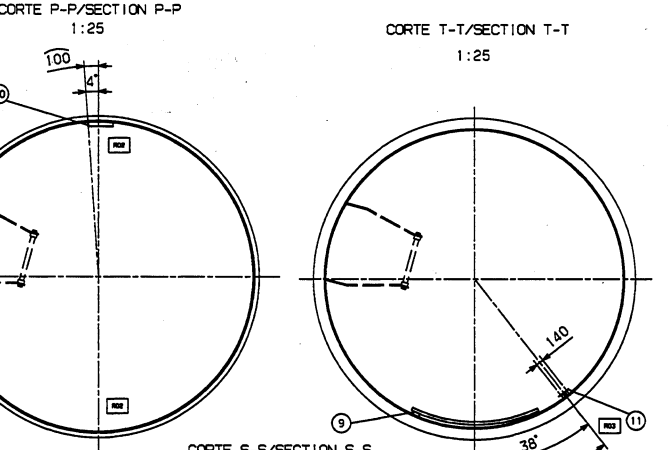
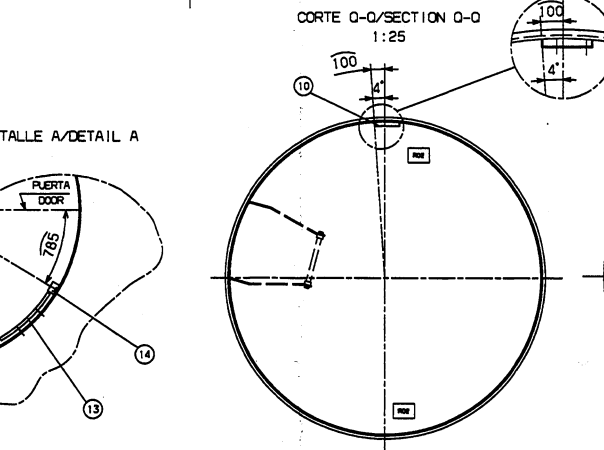
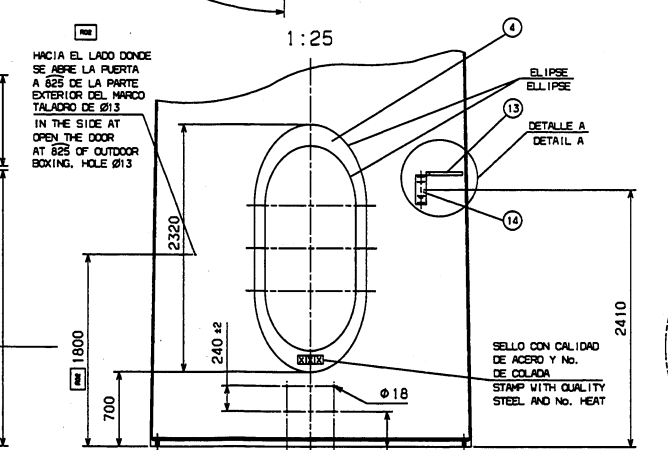
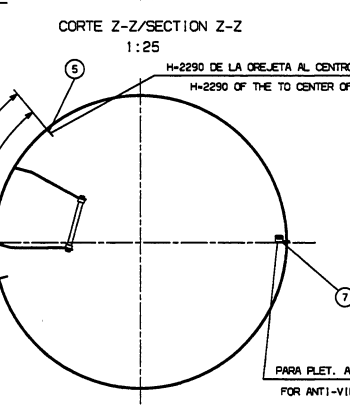
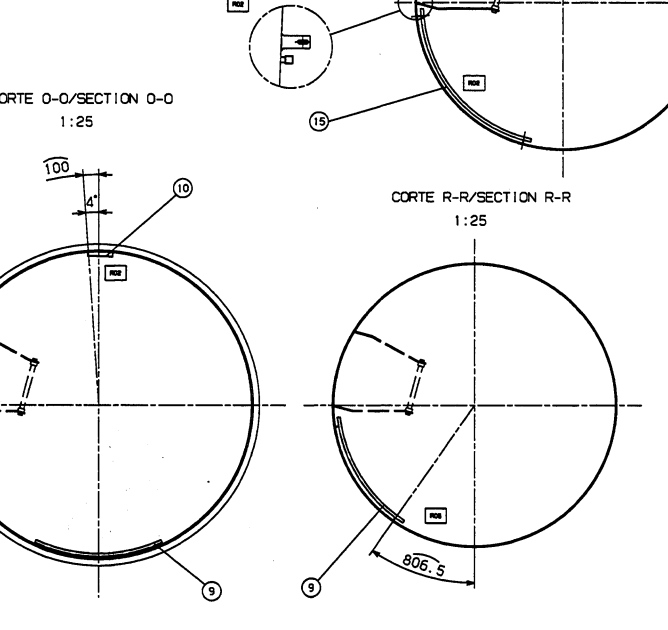
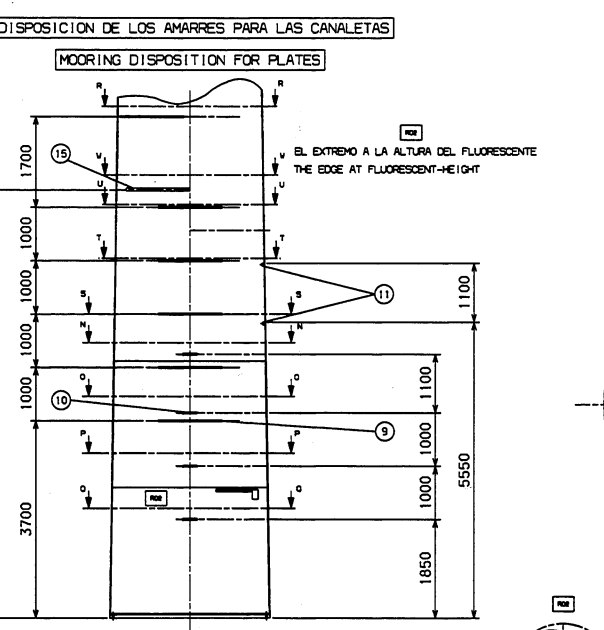
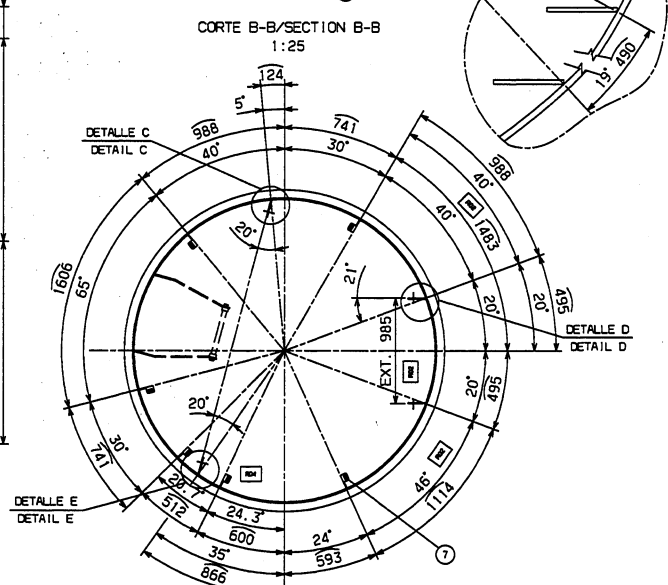
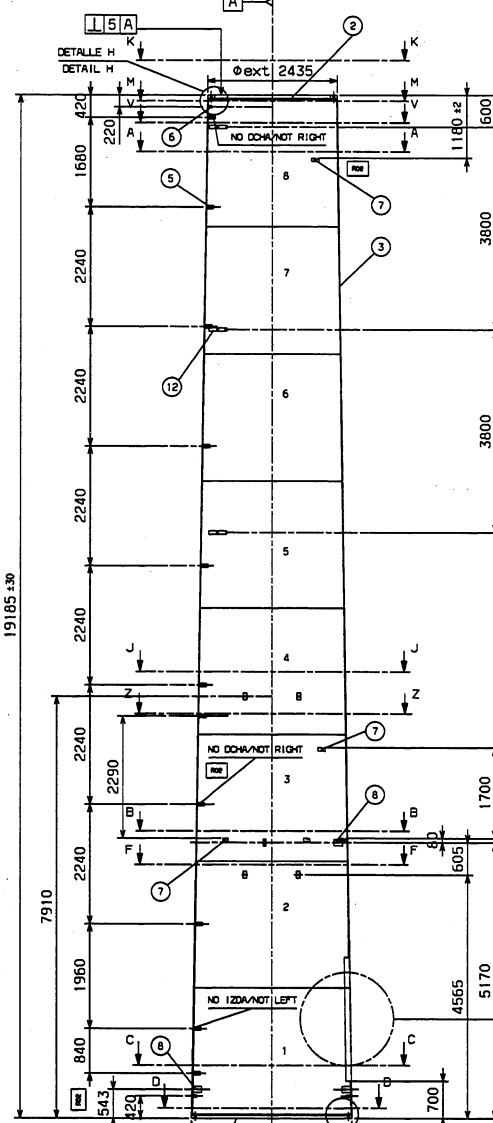
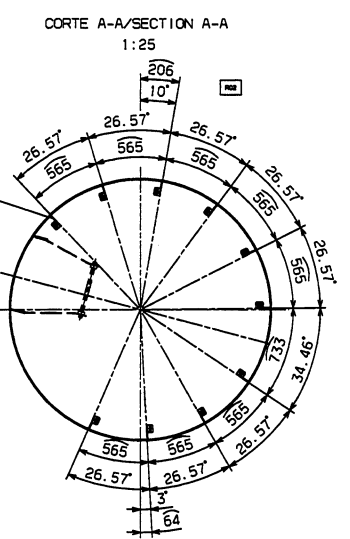
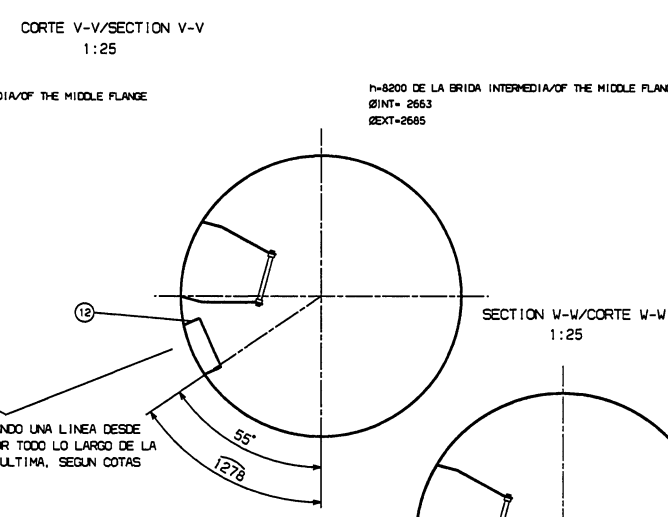
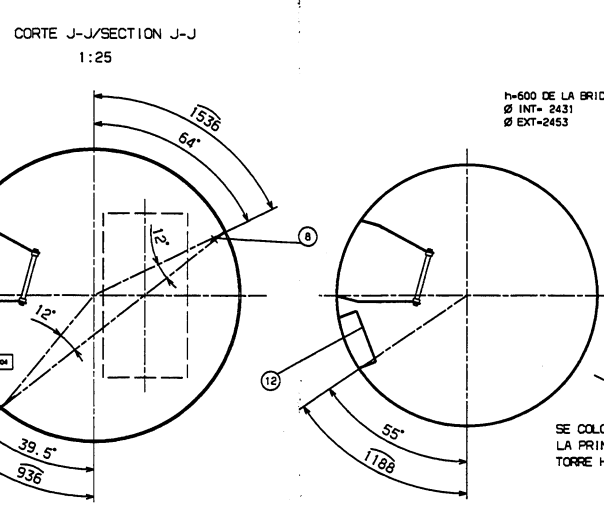
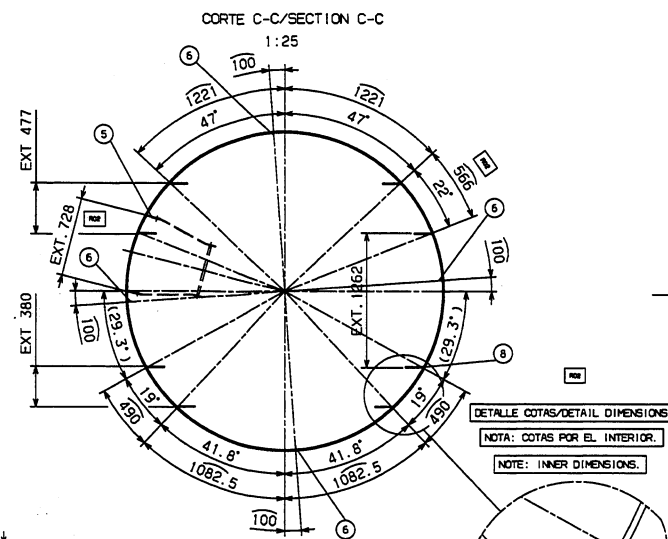
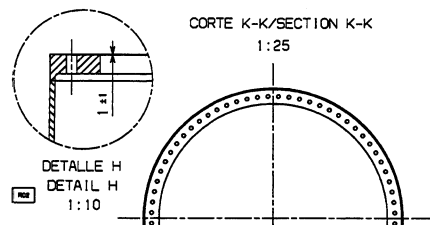
		Título: RELACIÓN DE DOCUMENTACIÓN	
		Title: GENERAL DOCUMENTATION	
CÓDIGO:	REV:	AUTOR/ AUTHOR:	APROBADO/APROVED: KMA
Doc VWS:	Clase:	REVISADO/CHECKED:	FECHA: 24/01/02 Pág: 1 De 12
<small> This document or embodiment of it in any media and the information contained in it are the property of Gamesa Eólica S.A.. It is an unpublished work protected under copyright laws free of any legal responsibility for errors or omissions. It is supplied in confidence and it must not be used without the express written consent of Gamesa Eólica S.A. for any other purpose than that for which it is supplied. It must not be reproduced in whole or in part in any way (including reproduction as a derivative work) nor loaned to any third part. This document must be returned to Gamesa Eólica S.A. on demand. </small>			

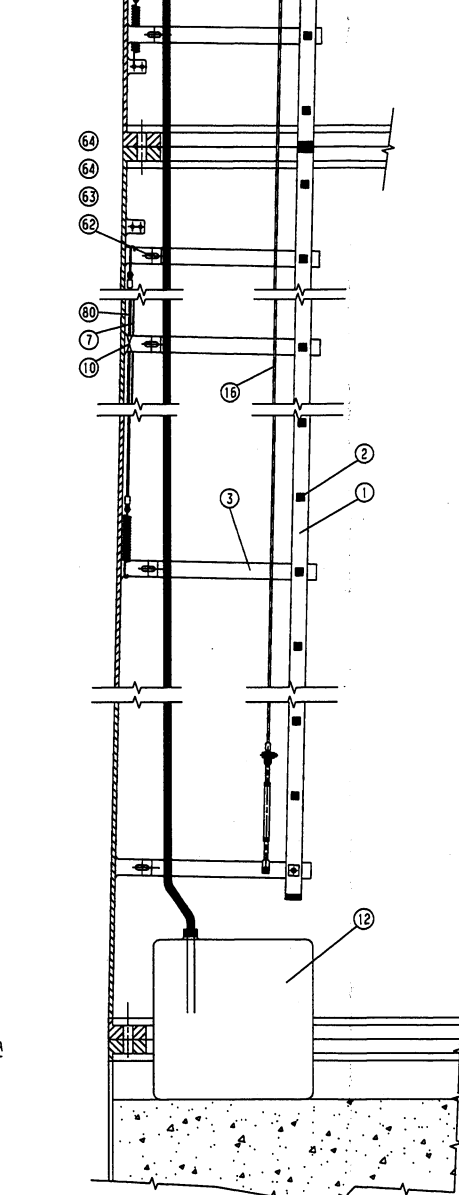
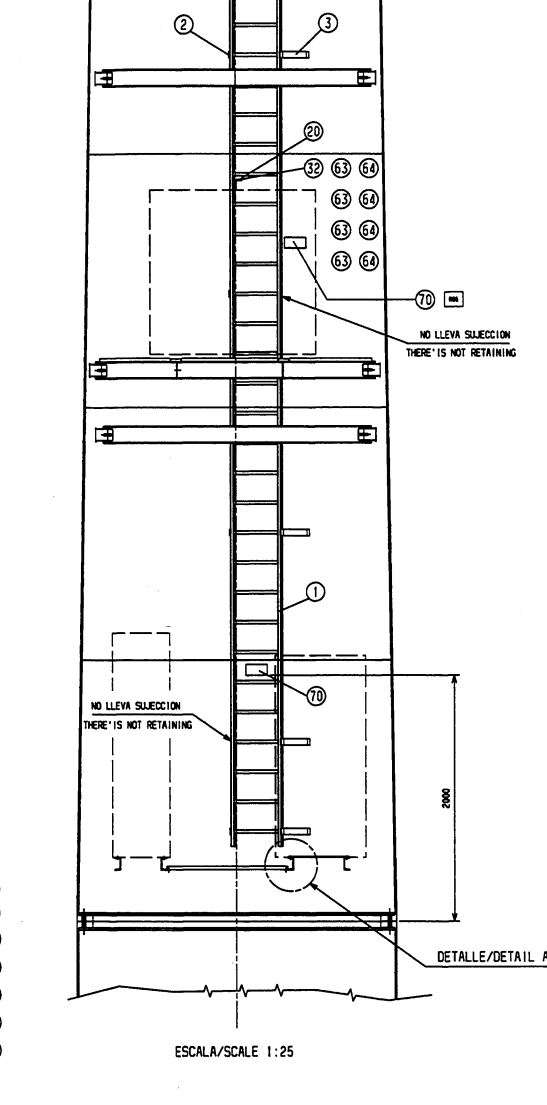
TOWER DRAWINGS MAIN COMPONENTS

- 1.081107 SECTION BOTTOM WELDED TOWER 45M
- 1.081108 SECTION BOTTOM ASSEMBLY TOWER 45 M
- 1.081109 SECTION TOP ASEEMBLY TOWER 45 M
- 1.081110 SECTION TOP WELDED TOWER 45 M
- 1.082105 SECTION MIDDLE WELDED TOWER 55 M
- 1.082106 SECTION MIDDLE ASSEMBLY TOWER 55 M
- 1.082107 SECTION BOTTOM WELDED TOWER 55 M
- 1.082108 SECTION BOTTOM ASSEMBLY TOWER 55 M
- 1.082109 STRUCTURE FOUNDATION STUB FOT TOWER 55 M
- 1.082110 FOUNDATION STUB FOR TOWER 55 M
- 1083507 SECTION BOTTOM WELDED TOWER 40 M
- 1083504 SECTIOM BOTTOM ASSEMBLY TOWER 40 M

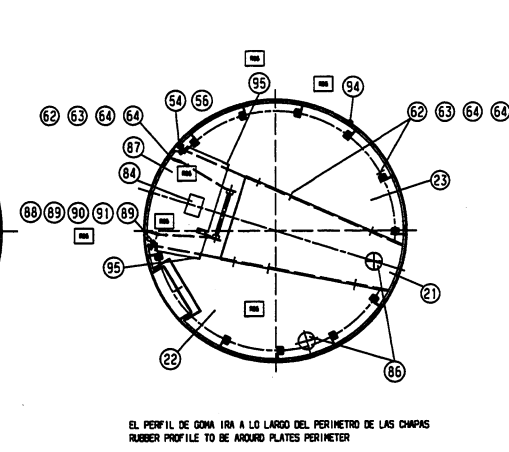
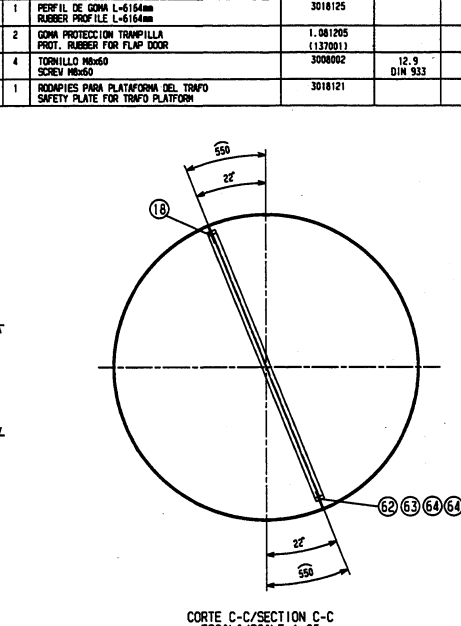
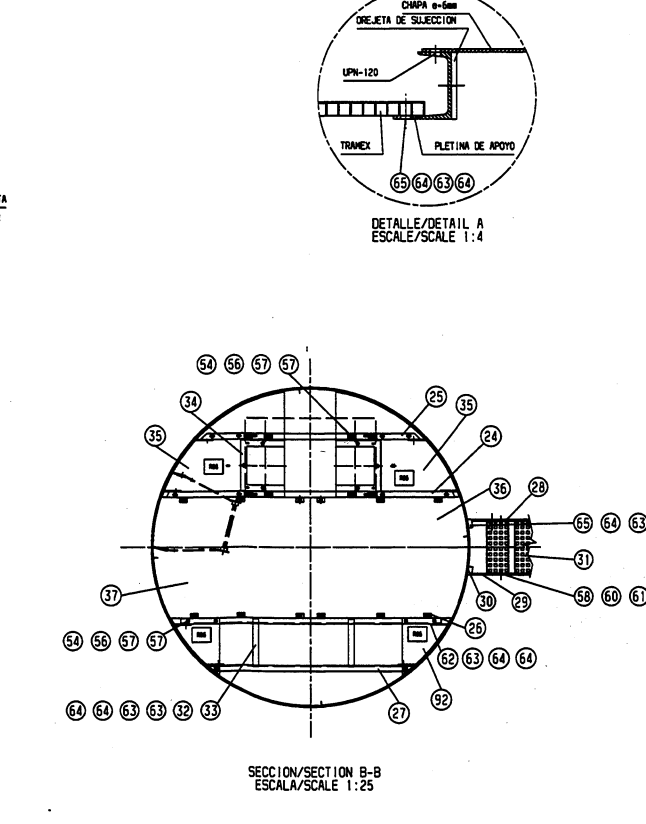


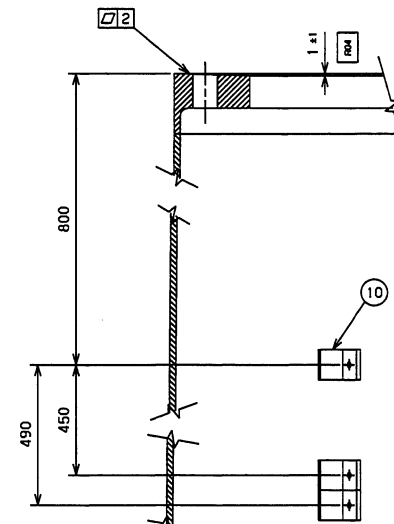
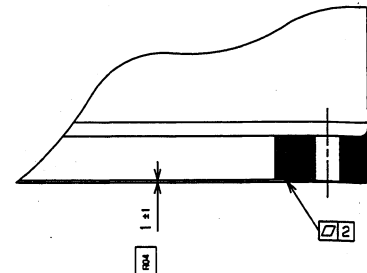
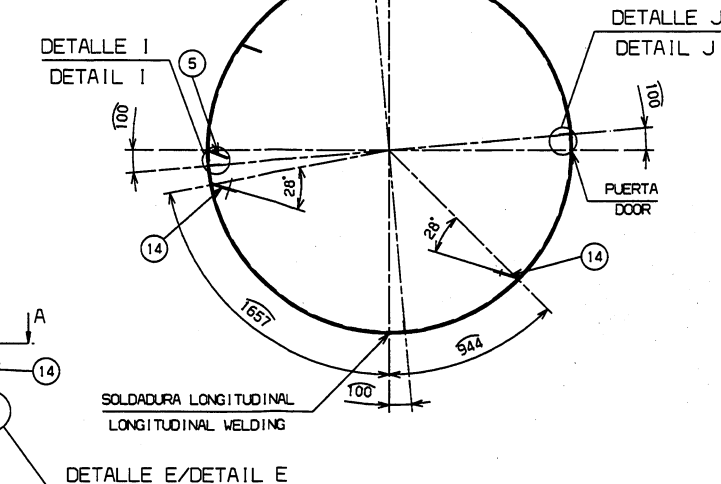
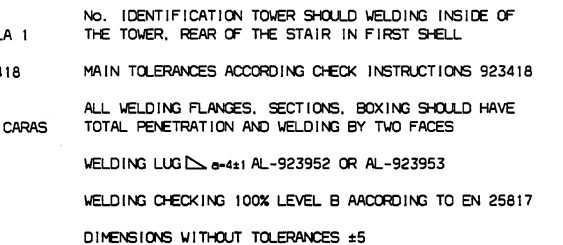
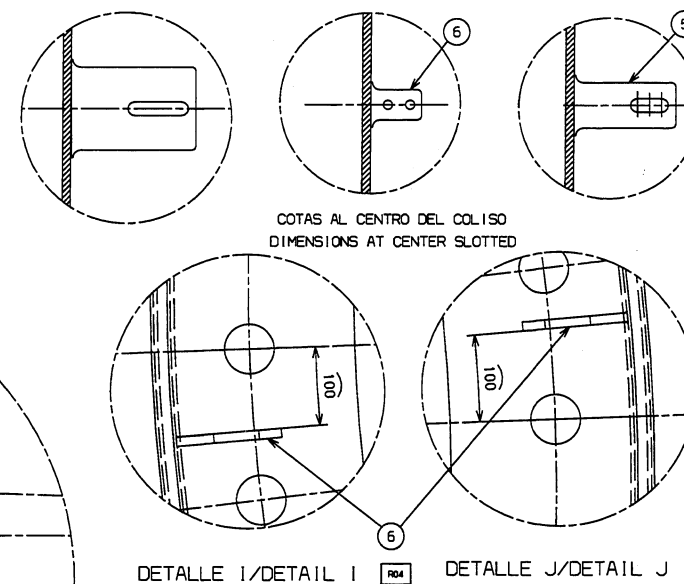
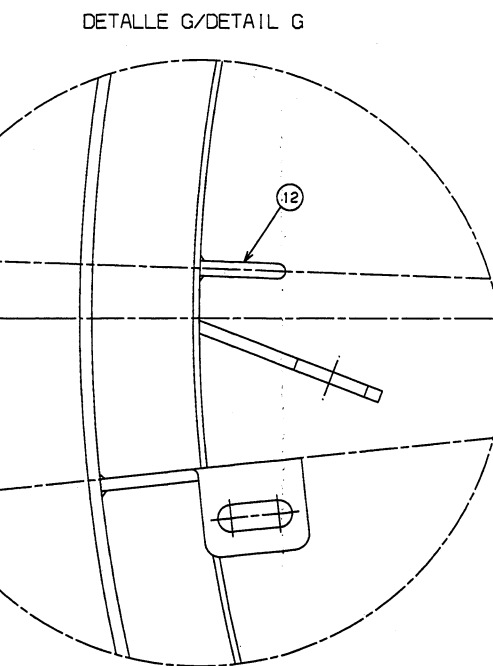
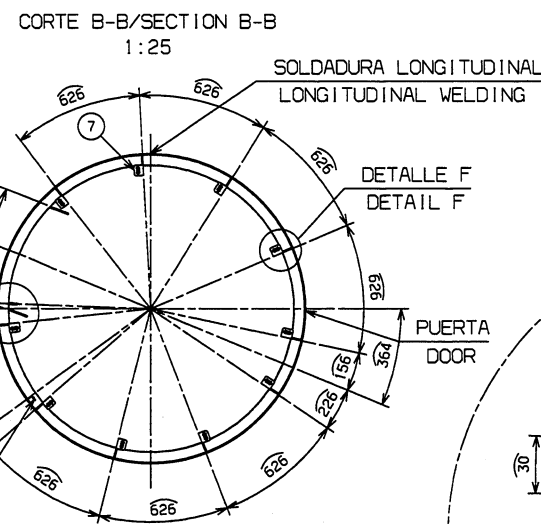
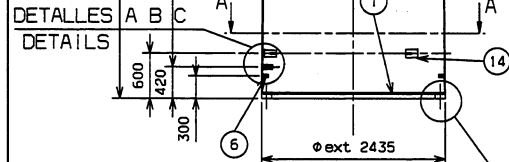
NOTAS/NOTES:
EL NO. DE IDENTIFICACION DE LA TORRE DEBERA SOLDARSE
CENTRO DE LA TORRE, DETRAS DE LA ESCALERA, EN LA VIROLA 1
TOLERANCIAS GENERALES, VER INSTRUCCION DE CONTROL 923418
TODAS LAS SOLDADURAS DE BRIDAS DEBERAN TENER PENETRACION
TOTAL Y SOLDADURA POR AMBAS CARAS
SOLDADURA OREJETAS AL-923952 O AL-923953
CONTROL DE SOLDADURAS 100% NIVEL B S/EN 25817
DIMENSIONES SIN TOLERANCIAS ±5
NO. IDENTIFICACION TORRE SHOULD WELDING INSIDE OF
THE TORRE, REAR OF THE STAIR IN FIRST SHELL
MAIN TOLERANCES ACCORDING CHECK INSTRUCTIONS 923418
ALL WELDING FLANGES SHOULD HAVE TOTAL PENETRATION
AND WELDING BY TWO FACES
WELDING LUG AL-923952 OR AL-923953
WELDING CHECKING 100% LEVEL B ACCORDING TO EN 25817
DIMENSIONS WITHOUT TOLERANCES ±5

ITEM	DESCRIPTION	QUANTITY	UNIT	PRICE	TOTAL
1	BRIDA INTERMEDIA	1	UNDA	1.735000	1.735000
2	BRIDA INTERMEDIA	1	UNDA	1.735000	1.735000
3	BRIDA INTERMEDIA	1	UNDA	1.735000	1.735000
4	BRIDA INTERMEDIA	1	UNDA	1.735000	1.735000
5	BRIDA INTERMEDIA	1	UNDA	1.735000	1.735000
6	BRIDA INTERMEDIA	1	UNDA	1.735000	1.735000
7	BRIDA INTERMEDIA	1	UNDA	1.735000	1.735000
8	BRIDA INTERMEDIA	1	UNDA	1.735000	1.735000
9	BRIDA INTERMEDIA	1	UNDA	1.735000	1.735000
10	BRIDA INTERMEDIA	1	UNDA	1.735000	1.735000
11	BRIDA INTERMEDIA	1	UNDA	1.735000	1.735000
12	BRIDA INTERMEDIA	1	UNDA	1.735000	1.735000
13	BRIDA INTERMEDIA	1	UNDA	1.735000	1.735000
14	BRIDA INTERMEDIA	1	UNDA	1.735000	1.735000
15	BRIDA INTERMEDIA	1	UNDA	1.735000	1.735000
16	BRIDA INTERMEDIA	1	UNDA	1.735000	1.735000
17	BRIDA INTERMEDIA	1	UNDA	1.735000	1.735000
18	BRIDA INTERMEDIA	1	UNDA	1.735000	1.735000
19	BRIDA INTERMEDIA	1	UNDA	1.735000	1.735000
20	BRIDA INTERMEDIA	1	UNDA	1.735000	1.735000
21	BRIDA INTERMEDIA	1	UNDA	1.735000	1.735000
22	BRIDA INTERMEDIA	1	UNDA	1.735000	1.735000
23	BRIDA INTERMEDIA	1	UNDA	1.735000	1.735000
24	BRIDA INTERMEDIA	1	UNDA	1.735000	1.735000
25	BRIDA INTERMEDIA	1	UNDA	1.735000	1.735000
26	BRIDA INTERMEDIA	1	UNDA	1.735000	1.735000
27	BRIDA INTERMEDIA	1	UNDA	1.735000	1.735000
28	BRIDA INTERMEDIA	1	UNDA	1.735000	1.735000
29	BRIDA INTERMEDIA	1	UNDA	1.735000	1.735000
30	BRIDA INTERMEDIA	1	UNDA	1.735000	1.735000
31	BRIDA INTERMEDIA	1	UNDA	1.735000	1.735000
32	BRIDA INTERMEDIA	1	UNDA	1.735000	1.735000
33	BRIDA INTERMEDIA	1	UNDA	1.735000	1.735000
34	BRIDA INTERMEDIA	1	UNDA	1.735000	1.735000
35	BRIDA INTERMEDIA	1	UNDA	1.735000	1.735000
36	BRIDA INTERMEDIA	1	UNDA	1.735000	1.735000
37	BRIDA INTERMEDIA	1	UNDA	1.735000	1.735000
38	BRIDA INTERMEDIA	1	UNDA	1.735000	1.735000
39	BRIDA INTERMEDIA	1	UNDA	1.735000	1.735000
40	BRIDA INTERMEDIA	1	UNDA	1.735000	1.735000
41	BRIDA INTERMEDIA	1	UNDA	1.735000	1.735000
42	BRIDA INTERMEDIA	1	UNDA	1.735000	1.735000
43	BRIDA INTERMEDIA	1	UNDA	1.735000	1.735000
44	BRIDA INTERMEDIA	1	UNDA	1.735000	1.735000
45	BRIDA INTERMEDIA	1	UNDA	1.735000	1.735000
46	BRIDA INTERMEDIA	1	UNDA	1.735000	1.735000
47	BRIDA INTERMEDIA	1	UNDA	1.735000	1.735000
48	BRIDA INTERMEDIA	1	UNDA	1.735000	1.735000
49	BRIDA INTERMEDIA	1	UNDA	1.735000	1.735000
50	BRIDA INTERMEDIA	1	UNDA	1.735000	1.735000
51	BRIDA INTERMEDIA	1	UNDA	1.735000	1.735000
52	BRIDA INTERMEDIA	1	UNDA	1.735000	1.735000
53	BRIDA INTERMEDIA	1	UNDA	1.735000	1.735000
54	BRIDA INTERMEDIA	1	UNDA	1.735000	1.735000
55	BRIDA INTERMEDIA	1	UNDA	1.735000	1.735000
56	BRIDA INTERMEDIA	1	UNDA	1.735000	1.735000
57	BRIDA INTERMEDIA	1	UNDA	1.735000	1.735000
58	BRIDA INTERMEDIA	1	UNDA	1.735000	1.735000
59	BRIDA INTERMEDIA	1	UNDA	1.735000	1.735000
60	BRIDA INTERMEDIA	1	UNDA	1.735000	1.735000
61	BRIDA INTERMEDIA	1	UNDA	1.735000	1.735000
62	BRIDA INTERMEDIA	1	UNDA	1.735000	1.735000
63	BRIDA INTERMEDIA	1	UNDA	1.735000	1.735000
64	BRIDA INTERMEDIA	1	UNDA	1.735000	1.735000
65	BRIDA INTERMEDIA	1	UNDA	1.735000	1.735000
66	BRIDA INTERMEDIA	1	UNDA	1.735000	1.735000
67	BRIDA INTERMEDIA	1	UNDA	1.735000	1.735000
68	BRIDA INTERMEDIA	1	UNDA	1.735000	1.735000
69	BRIDA INTERMEDIA	1	UNDA	1.735000	1.735000
70	BRIDA INTERMEDIA	1	UNDA	1.735000	1.735000
71	BRIDA INTERMEDIA	1	UNDA	1.735000	1.735000
72	BRIDA INTERMEDIA	1	UNDA	1.735000	1.735000
73	BRIDA INTERMEDIA	1	UNDA	1.735000	1.735000
74	BRIDA INTERMEDIA	1	UNDA	1.735000	1.735000
75	BRIDA INTERMEDIA	1	UNDA	1.735000	1.735000
76	BRIDA INTERMEDIA	1	UNDA	1.735000	1.735000
77	BRIDA INTERMEDIA	1	UNDA	1.735000	1.735000
78	BRIDA INTERMEDIA	1	UNDA	1.735000	1.735000
79	BRIDA INTERMEDIA	1	UNDA	1.735000	1.735000
80	BRIDA INTERMEDIA	1	UNDA	1.735000	1.735000
81	BRIDA INTERMEDIA	1	UNDA	1.735000	1.735000
82	BRIDA INTERMEDIA	1	UNDA	1.735000	1.735000
83	BRIDA INTERMEDIA	1	UNDA	1.735000	1.735000
84	BRIDA INTERMEDIA	1	UNDA	1.735000	1.735000
85	BRIDA INTERMEDIA	1	UNDA	1.735000	1.735000
86	BRIDA INTERMEDIA	1	UNDA	1.735000	1.735000
87	BRIDA INTERMEDIA	1	UNDA	1.735000	1.735000
88	BRIDA INTERMEDIA	1	UNDA	1.735000	1.735000
89	BRIDA INTERMEDIA	1	UNDA	1.735000	1.735000
90	BRIDA INTERMEDIA	1	UNDA	1.735000	1.735000
91	BRIDA INTERMEDIA	1	UNDA	1.735000	1.735000
92	BRIDA INTERMEDIA	1	UNDA	1.735000	1.735000
93	BRIDA INTERMEDIA	1	UNDA	1.735000	1.735000
94	BRIDA INTERMEDIA	1	UNDA	1.735000	1.735000
95	BRIDA INTERMEDIA	1	UNDA	1.735000	1.735000
96	BRIDA INTERMEDIA	1	UNDA	1.735000	1.735000
97	BRIDA INTERMEDIA	1	UNDA	1.735000	1.735000
98	BRIDA INTERMEDIA	1	UNDA	1.735000	1.735000
99	BRIDA INTERMEDIA	1	UNDA	1.735000	1.735000
100	BRIDA INTERMEDIA	1	UNDA	1.735000	1.735000



#	ITEM	QTY	UNIT	DESCRIPTION	ESTIMATED QTY	ESTIMATED PRICE	TOTAL PRICE	REMARKS
1	1	1	EA	ESCALERA LADDER	1.735519			
2	10	10	EA	VARILLA ROSCADA M16x530 BOLT ROD M16x530	1.081118			DIN 975
3	15	15	EA	SUJECION ESCALERA LADDER SCAFFOLD	1.735638			S235 JR02
4	2	2	EA	TRAMPE ESCALERA BRACE LADDER	1.736639			S235 JR02
5	1	1	EA	SOPORTE FLORESCENTE SUPPORT FOR LAMP	1.736403			S235 JR EN 10025
6	1	1	EA	OROL, SUJETA CABLE SALVA C. L.F. SAVE CABLE	1.735511			S235 JR EN 10025
7	1	1	EA	CABLE ALUMBRADO CABLE LIGHT	1.081161			
8	1	1	EA	ETIQUETA DE ALUMINIO LABEL ALUMINIUM	1.735699			ALUMINIO ALUMINIUM
9	1	1	EA	PUERTA DOOR	1.081018			
10	50	50	EA	ABRAZADERA CABLE 5x200 BINDING HOOP CABLE 5x200	1.081157			
11	1	1	EA	INTERRUPTOR BREAKER	1.081091			
12	1	1	EA	BIDON DE 100 L. CAN 100 L.	1.081092			
13	1	1	EA	BASE PLATE	1.081093			
14	1	1	EA	PORTEFLORESCENTES SUPPORT FOR FLORESCENT	1.081094			
15	1	1	EA	FLORESCENTE FLORESCENT	1.081095			
16	1	1	EA	SINCA DE SEGURIDAD FROM CABLE SECURITY	1.081162			
17	1	1	EA	VIGA AUXILIAR TRAFIO GIRDER AUXILIARY TRAFIO	1.081065			S235 JR EN 10025
18	1	1	EA	VIGA AUXILIAR CABINA-GROUND GIRDER AUXIL. TOWER-GROUND	1.081066			S235 JR EN 10025
19	1	1	EA	RETENEDOR DE PUERTA DOOR FIXER	1.081182			INDX 316
20	1	1	EA	PLETINA ANTI-VIBRACIONES LOWER PLATE VIBRATION	1.081053			S235 JR EN 10025
21	1	1	EA	PIÑA FORMA CUNA LOWER PLATE	1.081017			S235 JR EN 10025
22	1	1	EA	PLATAFORMA INF. LADO CABLES SOLDADO CABLES SIDE PLATE, BOTTOM PLATE WELDED	3010142			S235 JR EN 10025
23	1	1	EA	REDUCCION HALFPOOR SHARPED PLATE	1.081016			S235 JR EN 10025
24	1	1	EA	UPH-120 SUL. CABINA LARGO BLADE BACK UP BOOTH LONG	1.081045			S235 JR EN 10025
25	1	1	EA	UPH-120 SUL. CABINA CORTO BLADE BACK UP BOOTH SHORT	1.081048			S235 JR EN 10025
26	1	1	EA	UPH-120 SUL. GRUPO LARGO BLADE BACK UP BOOTH LONG	1.081050			
27	1	1	EA	UPH-120 SUL. GRUPO CORTO BLADE BACK UP BOOTH SHORT	1.081051			A 37
28	1	1	EA	SOPORTE OCHO. ESCALERA EXT. STRING FIGHT OUTS	1.735684			S235 JR EN 10025
29	1	1	EA	SOPORTE 1220. ESCALERA EXT. STRING LEFT OUTS	1.735685			S235 JR EN 10025
30	2	2	EA	JUNTA DE GOMA RUBBER JOINT F. STERS	1.735511			MEPREMO SHORE 55-60
31	3	3	EA	ESCALERA EXTERIOR EXTERNAL STAIR	1.081030			CONCRETA
32	5	5	EA	ESPARADAZO M16x200 BOLT ROD M16x200	1.081148			DIN 975
33	4	4	EA	PLETINA SOPORTE GRUPO PLATE SUPPORT GRUPO	1.081052			
34	2	2	EA	CHAPA SUPLEMENTO ADICIONAL PLATE 1, 081192	1.081210			OPTIONAL
35	2	2	EA	CHAPA PROT. CABINA (ESCAL.) PLATE PLATFOR STAIR	1.081042			S235 JR EN 10025
36	1	1	EA	TRAMEX LADO EXTERNO TRAMEX FOR CABIN ENTRANCE	1.081043			S235 JR EN 10025
37	1	1	EA	TRAMEX LADO ESCALERA PLATE FOR CABIN STAIR	1.081044			S235 JR EN 10025
38	1	1	EA	UPH-160 LONG GIRDER TRAFIO PLANT	1.081054			S235 JR EN 10025
39	1	1	EA	UPH-160 SUJEC. TRAFIO CORTO SHORT GIRDER FOR TRAFIO PLANT	1.081057			S235 JR EN 10025
40	1	1	EA	UPH-160 SUJEC. TRAFIO CORTO SHORT GIRDER FOR TRAFIO PLANT	1.081058			S235 JR EN 10025
41	4	4	EA	ARMADILLA PARA TRAMEX DE SEGURIDAD WASHER FOR SECURITY TRAMEX	3010019			
42	1	1	EA	TRAMEX LADO 1220. TRAMEX FOR SIDE	1.081062			S235 JR EN 10025
43	1	1	EA	TRAMEX CENTRO DELANTERO TRAMEX CENTER FRONT	1.081061			S235 JR EN 10025
44	1	1	EA	TRAMEX CENTRO TRASERO TRAMEX CENTER REAR	1.081063			S235 JR EN 10025
45	1	1	EA	TRAMEX LADO DERECHO GRANDE TRAMEX SIDE RIGHT LONG	1.081064			S235 JR EN 10025





DIMENSIONS WITHOUT TOLERANCES ± 5

14	2	GREJETA SUECION PERFIL LUG FOR SUECTION PROFILE	1.081008 (420104)			
13	1	CILINDRO SOBRE ARMERO 80x600 COVER PLATE F. SANDER 80x600	1.081067 (420207)			
12	1	CODO MACHO - HEMBRA 3/4" BEND MALE-FEMALE 3/4"	1.081097 (114003)			
11	1	ARENA SECA DE CURAZO L-10 DRY SAND QUARTZ L-10	1.081098 (820031)			
10	3	ANGULAR 40x40 L=40 ANGLE 40x40 L=40	1.081010 (420105)			
9	3	SEGMENTO SUPERIOR TOP SEGMENT	1.736547 (736547)			
8	3	SEGMENTO INFERIOR BOTTOM SEGMENT	1.736548 (736548)			
7	10	GREJETAS PLEGADAS BENDED LUG	1.736600 (736600)			
6	6	GREJETAS TONIA TIERRA LUG FOR GROUND CLAMP	1.736626 (736626)			
5	22	GREJETAS ESCALERA LUG FOR LADDER	1.736601 (736601)			
4	1	VIROLA ARMERO SHELL SANDING	1.736646 (736646)			
3	1	JUEGO DE VIROLAS SET OF SHELLS	1.736630 (736630)			
2	1	BRIDA SUPERIOR TOP FLANGE	1.736503 (736503)			
1	1	BRIDA INTERMEDIA INTERMEDIATE FLANGE	1.736500 (736500-1)			
Nº NO	UNIDS. UNITS	DESIGNACION IDENTIFICATION	REFERENCIA REFERENCE	MATERIAL	NORMA STANDARD	PESO WEIGHT
PLANO TRAMO SUPERIOR SOLDADO TORRE 40, 45, 55 m.						

RO4: AOLLERIOS DE CORTE C-C Y DETALLES I & J DESCABALGADOS, EN DETALLE D CAMBIA DE HEMBRA A MACHO, Y DE MACHO A HEMBRA. CAMBIA POSICION COTA DE 1460 EN SECCION TORRE. NUEVA COTA DE 141 EN DETALLE M. CAMBIA COTA DE 3 CON TOLERANCIA A 141 EN DETALLE N. CAMBIA EN DETALLE B-B LA COTA 726 INT. A 726 EXT. CAMBIA COTA DE 3 CON TOLERANCIA A 141 EN DETALLE E.

No. DE CAMBIOS:

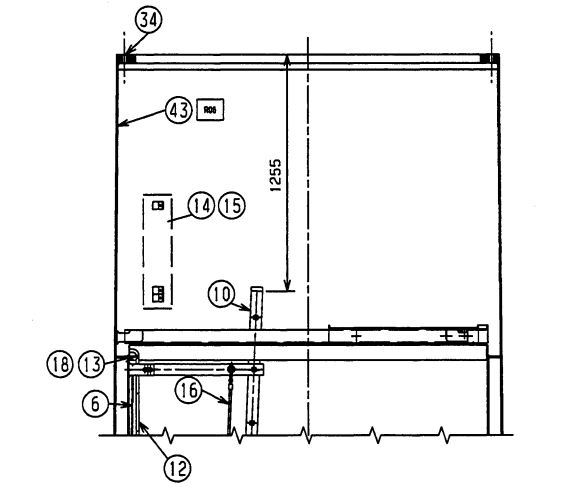
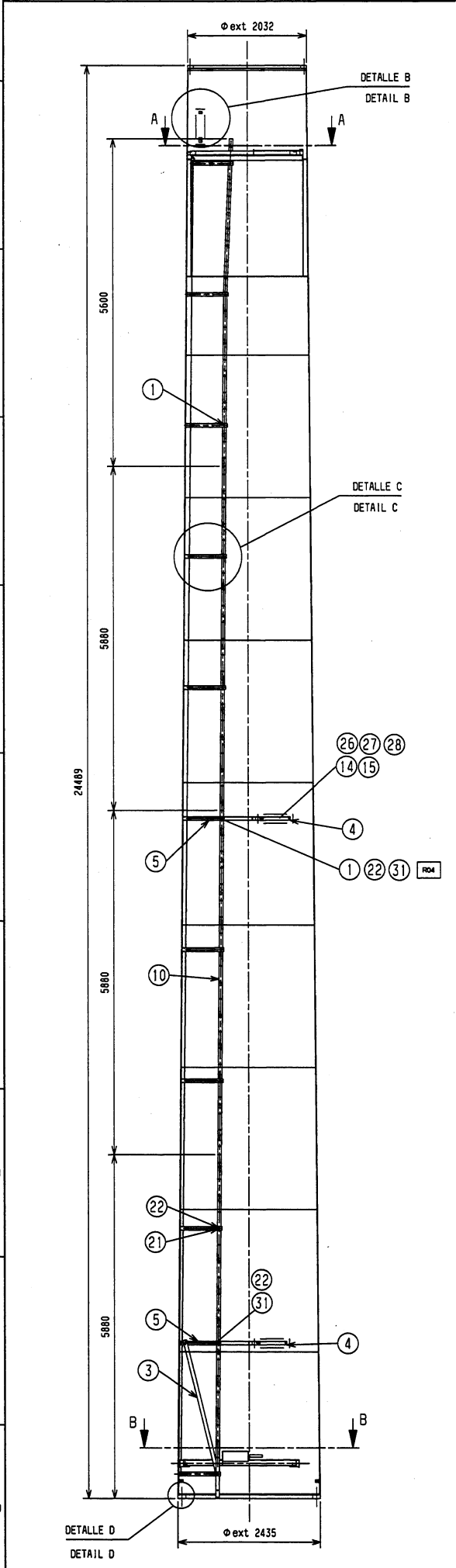
FORMA REV. REV. DATE	R	1	2	3	4	DIBUJO N° DRMG No.
FOO.	APPO.	12.01.00	5	6	7	8

1.081109
(120700)

FECHA DATE	17.08.99	DIBDO. SIGN.	HDC	RVOO. REV.	IUB	APDO. APVED.	JILL	PESO WEIGHT	-	MAT. MATR.
---------------	----------	-----------------	-----	---------------	-----	-----------------	------	----------------	---	---------------

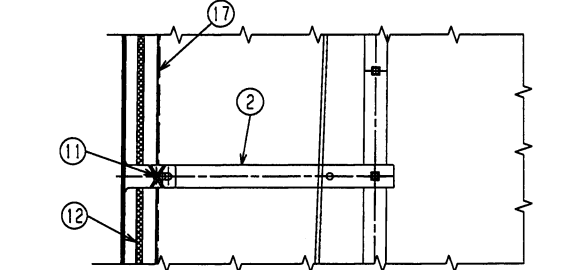
Gameasa Eólica

LAYOUT DE INGENIERIA ENGINEERING LAYOUT	N° SOL 487	REF. DE PIEZA SIMILAR SIMILAR PART REFERENCE
DATUM		
LLAMADA CALL-OUT		

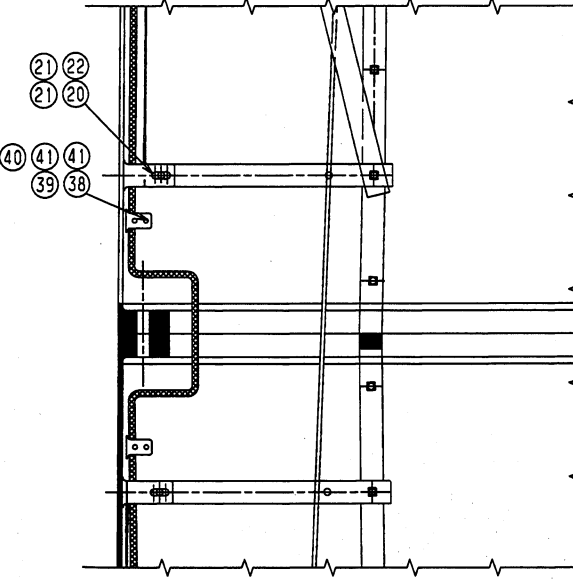


APLICAR EN EL INTERIOR DE LOS TALADROS DE LAS BRIDAS
APPLY INSIDE HOLE FLANGES

DETALLE/DETAIL B
ESCALA/SCALE 1:25

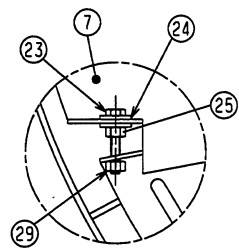


DETALLE/DETAIL C
ESCALA/SCALE 1:10



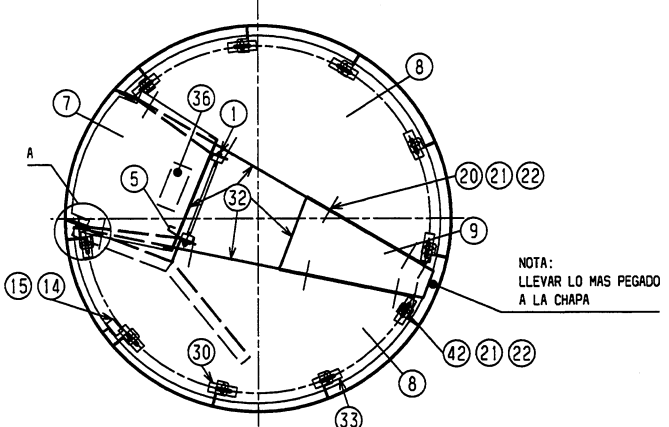
DETALLE/DETAIL D
ESCALA/SCALE 1:10

N°	UNS	DENOMINACION DENOMINATION	N° PLANO O ESTANDAR DRW No OR STANDARD	ESPEC. MATERIAL MATERIAL SPEC.	PESO WEIGHT
1	11	VARILLA ROSCADA M16x530 BOLT ROD M16x530	1.081118 (152249)	8.8 FZV DIN 931	
2	20	SUJECCION ESCALERA LADDER SUECTION	1.736538 (736538)	GALVANIZADO	
3	2	TIRANTE ESCALERA BRACE LADDER	1.736539 (736539)	GALVANIZADO	
4	2	SOPORTE LAMPARA SUPPORT FOR LAMP	1.736403 (736403)	GALVANIZADO	
5	2	OREJETA SEGURIDAD LUG FOR SAFETY	1.736511 (736511)	GALVANIZADO	
6	1	ALAMBRE GUIA CABLE GUIDE STEEL ROPE	1.081068 (736338A)		
7	1	TRAMPILLA FLAP DOOR	1.081069 (420594-1)	ALUMINIO AL	
8	2	PLATAFORMA (MEDIA LUNA) PLATFORM (HALFMOON)	1.081070 (420591-1)	GALVANIZADO	
9	1	PLATAFORMA (TAPA) PLATFORM (HALFMOON)	1.081071 (420593-1)	GALVANIZADO	
10	1	ESCALERA LADDER	1.736516 (736516)	ALUMINIO AL	
11	50	ABRAZADERA BINDING HOOP	1.081057 (420606)		
12	1	TUBERIA 3/4"x45m (OPCIONAL) PIPE 3/4"x45m	1.081128 (114000)		
13	1	ABRAZADERA MIKALOR Ø16-27mm BIND. HOOP MIKALOR Ø16-27mm	1.081129 (152249)	PVC	
14	6	FLUORESCENTE FLUORESCENT	1.081095 (420604)		
15	3	PORTA-FLUORESCENTE SUPPORT FOR FLUORESCENT	1.081094 (420603)		
16	1	CABLE SEG. (OPCIONAL PARQUE) STEEL ROPE SAFETY	1.081072 (736550V)	GALVANIZADO	
17	1	MANGUERA RECTA Ø26mm MAX HOSE 26mm MAX	1.081161 (420605)		
18	1	RACOR 3/4" Ø20 CONNECTING PIPE 3/4" Ø20	1.081101 (114001)		
19	1	CONJUNTO SISTEMA BUCLE CURL SYSTEM ASSEMBLY	1.081163 (900-3103.0)		
20	26	TORNILLO M16x40 SCREW M16x40	154415	DIN 933	
21	86	ARANDELA M16 WASHER M16	1.081144	DIN 9021	
22	60	TUERCA DE BLOQUEO M16 BLOCKING NUT M16	157759	8.8 FZB DIN 985	
23	2	TORNILLO M12x90 SCREW M12x90	1.081096 (551388)	8.8 FZV DIN 933	
24	4	ARANDELA M12 WASHER M12	1.081097 (155772A)	DIN 9021	
25	2	TUERCA M12 NUT M12	1.081067 (420207)	8.8 FZB DIN 985	
26	6	TORNILLO M5x30 (AM. FLUOR.) SCREW M5x30	1.081160 (157100A)	DIN 933	
27	12	ARANDELA M5 (ANARRE FLUOR.) NUT M5	1.081159 (157100C)	DIN 125	
28	6	TUERCA M5 (ANARRE FLUORESC.) BLOCKING NUT M5	1.081158 (157100B)	DIN 934	
29	2	TUERCA DE BLOQUEO M12 BLOCKING NUT M12	1.081156 (157352A)	DIN 985	
30	0.5	POLIURETANO SELLADO POLYURETHANE SEALING	1.081206 (156817)		
31	2	ARANDELA M16 WASHER M16	1.081145 (156817)	DIN 125	
32	1	GOMA PROTECCION TRAMPILLA PROT. RUBBER FOR FLAP DOOR	1.081205 (137001)		
33	10	CHAPA SELLADO PLATAF. SUP. SEALING PLATE	1.081121 (137003)		
34	0.5	SPRAY DE Zn SPRAY Zn	1.081204 (200074)		
35	1	PEGATINA SEGURIDAD TUBO LABEL SECURITY TUBE	1.081039 200101		
36	1	PEGATINA SEGURIDAD TRAMP. LABEL SECURITY FLAP DOOR	1.081040 200102		
37	2	TORNILLO M16x50 SCREW M16x50	154415A	DIN 933	
38	4	CABLE DE CU DESNUDO (NUSA) Cu CABLE (NASS)	1.081011 420607		
39	4	TORNILLO M8x25 SCREW M8x25	152363	DIN 933	
40	4	TUERCA M8 NUT M8	152364A	DIN 934	
41	8	ARANDELA M8 WASHER M8	152365	DIN 125	
42	10	TORNILLO M16x45 SCREW M16x45	9006005	DIN 933	
43	1	PEGATINA DE SEGURIDAD SECURITY LABEL	3218003		

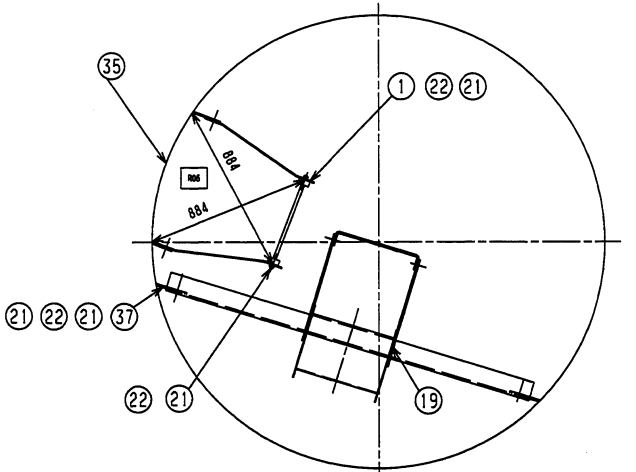


DETALLE/DETAIL A
ESCALA/SCALE 1:2

REV.	DESCRIPCION DESCRIPTION	DIBUJ. DRAWING	REV.	FECHA DATE
004	CAMBIA EL DET. A FALTA UNA ARANDELA. SE AÑADEN NUEVOS ELEMENTOS AL CAJETIN. EN SECC. A-A FALTA OREJETA DE SEGURIDAD. DESAPARECE MARCA TACO DE GOMA. CAMBIA DET. D. COTA (EXT. 2435 COMA 2. NUEVO TEXTO EN SECC. A-A	HOC	IUB	17.09.99
005	CAMBIA LOS 10 TORNILLOS DE LA PLATAFORMA SUP. DE M16x40 POR M16x45. DESAPARECEN 10 ARANDELAS M16 DEL N° 21.	OGE	CSC	04.09.00
006	SE INCLUIE MARCA 43. Y COTA DE ESCALERA	AUR	JMC	23.01.01



SECTION/SECTION A-A
ESCALA/SCALE 1:20



SECTION/SECTION B-B
ESCALA/SCALE 1:20

NOTA/NOTE:
LA ESCALERA NO DEBE PASAR LA LINEA DE BRIDAS
THE LADDER MUSTN' PASS LINE OF PLATE
TODAS LAS DIMENSIONES SIN TOLERANCIAS ±2
ALL DIMENSIONS WITHOUT TOLERANCES ±2

STATUS DE ULTIMA REVISION LAST REVISION STATUS	PI-100	TITULO PLANO SECTION TOP WELDED TOWER 40.45.55m.
DISEÑADO DESIGN	AUR	FECHA DATE
VERIFICADO VERIFIED	JMC	FECHA DATE
APROBADO APPROVED	JILL	FECHA DATE
PLANO N° DRWG No.	1.081110R06(420500)	Hoja 1 de 1 SHEET 1 of 1

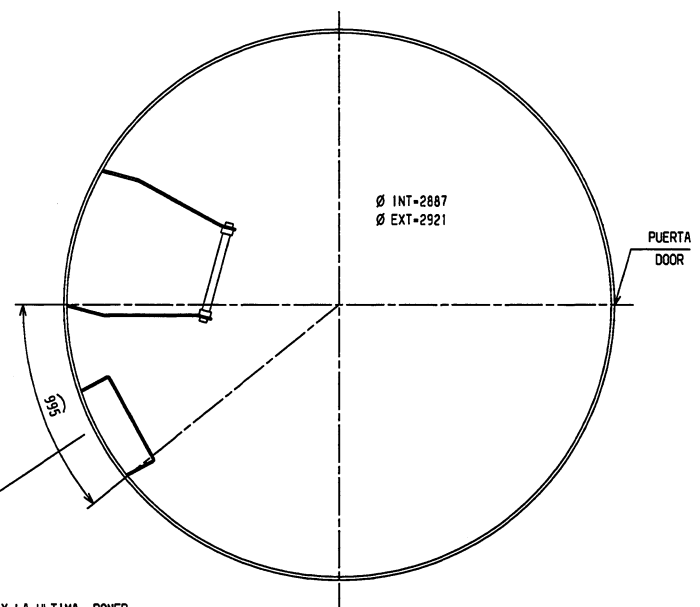
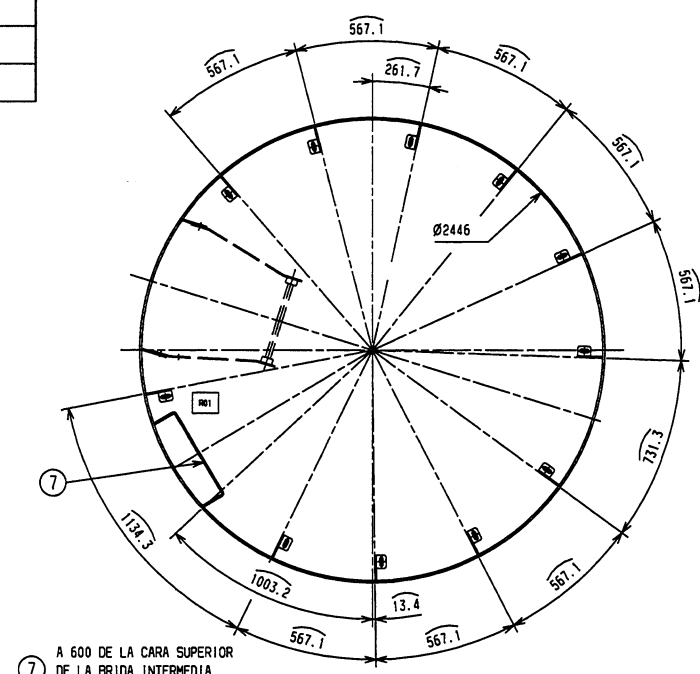
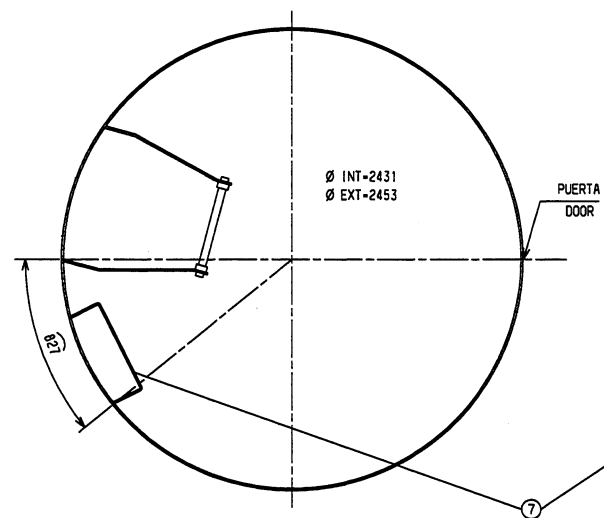
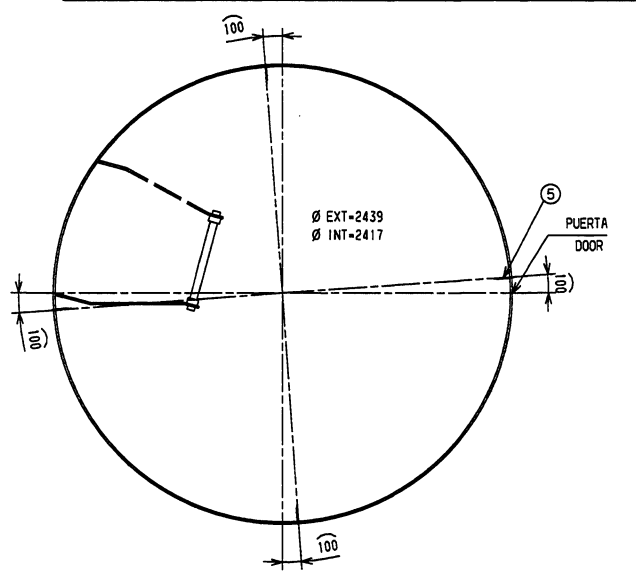
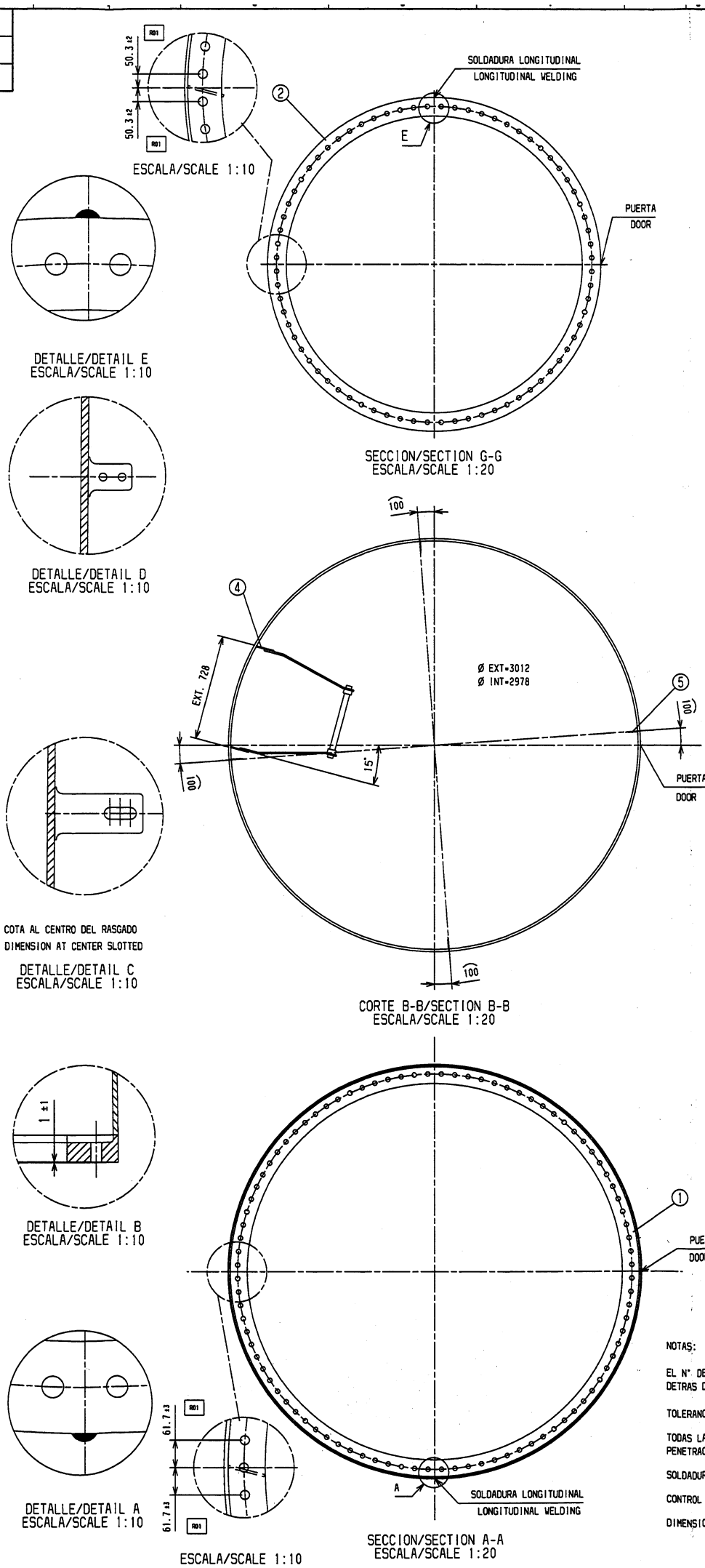
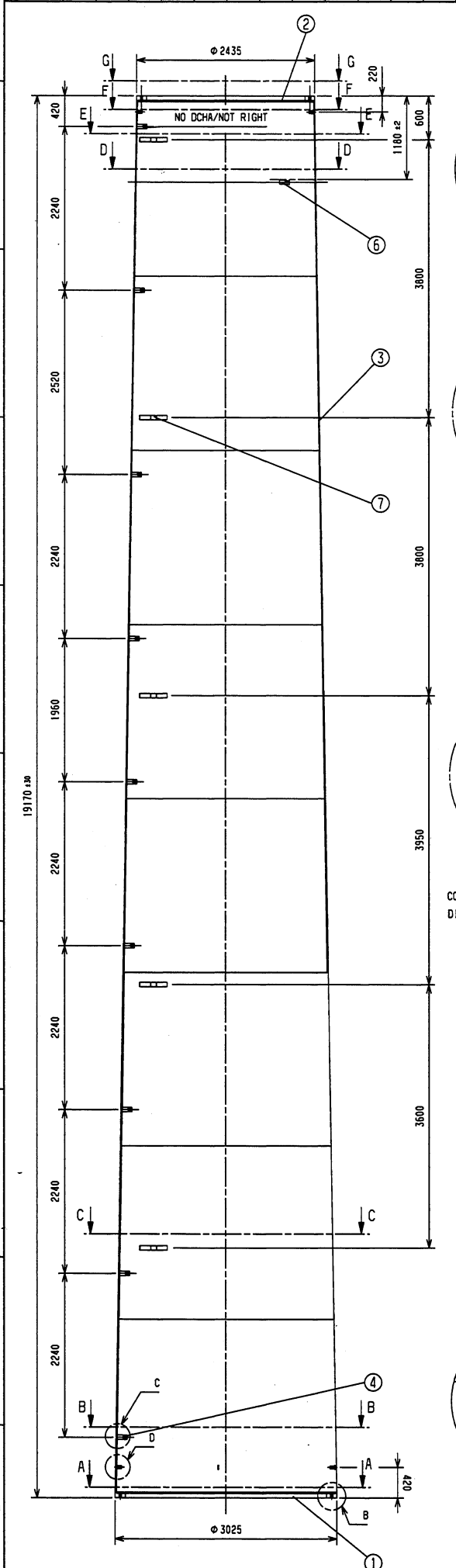
PORTALE DE ACUERDO A ASSEMBLY TO		
INSPECCION DE CALIDAD QUALITY INSPECTION TO		
PROCESO DE ACUERDO A PROCESS TO		
FINICION DE LA PIEZA SEGUN IDENTITY FINISHED TO		
TEXTURA SUPERFICIAL SEGUN SURFACE TEXTURE TO		
CLASIFICACION PIEZA SEGUN CLASSIFICATION OF PART TO		
TOL. LINEALES Y ANG. SEGUN LINEAL AND LINEAR TOL. TO		
TOL. GEOMETRICAS SEGUN GEOMETRIC TOL. TO		
MATERIAL MATERIAL		
ESPECIFICACION SPECIFICATION		
DELINACION DE ACUERDO A DRAWING PRACTICE TO	PI-100	2004
ESPECIFICACION SPECIFICATION		

Gamessa Edilca
Este plano no puede ser usado, publicado, ni comunicado a terceros partes o reproducido sin autorizacion escrita de GAMESSA EDILCA.
This drawing cannot be used, published, nor communicated to third parties or reproduced without written authorization of GAMESSA EDILCA.

LAYOUT DE INGENIERIA ENGINEERING LAYOUT	N° SOL 501				REF. DE PIEZA SIMILAR SIMILAR PART REFERENCE							
DATUM DATUM												
LLAMADA CALL -OUT												

N° No.	UNS UNS	DENOMINACION DENOMINATION	N° PLANO O ESTANDAR DRW No OR STANDAR	ESPEC. MATERIAL MATERIAL SPEC.	PESO WEIGHT
1	1	BRIDA INTERMEDIA (INFERIOR) MIDDLE FLANGE	1.082012 (455002-1)		
2	1	BRIDA INTERMEDIA (SUPERIOR) MIDDLE FLANGE	1.736500 (736500)		
3	1	JUEGO DE VIROLAS SET OF SHELLS	1.082035 (455632)		
4	17	OREJETA ESCALERA LUG FOR LADDER	1.736601 (736601)		
5	8	OREJETAS TOMA DE TIERRA LUG FOR GROUND CLAMP	1.736525 (736525)		
6	11	OREJETAS PLATAFORMAS BENDED LUG	1.736600 (736600)		
7	5	U BAJADA DE CABLES HORIZONTAL TRAY CABLES	1.081143 (V00-3103.58)		

REV.	DESCRIPCION DESCRIPTION	DIBUJA DRAW	FECHA DATE
R00		MDC IUB	30.11.99
R01	SE DIBUJA EN SECC. D-D ABRAZADERA Y SE AÑADE OREJETA NUEVA POSICION OREJETAS EN SECC. D-D SE MODIFICA POSICION DE LA ABRAZADERA Y SE AÑADE 1 OREJETA. SE INCLUTE DET. PARA EL POSICIONAMIENTO MARCA 4.	AUR JNC	23.01.01




NOTA/NOTE:
TIRAR UNA CUERDA ENTRE LA PRIMERA Y LA ULTIMA. PONER
EL RESTO A SU ALTURA, CONTRA LA LINEA TRAZADA.
LAY A LINE FROM THE FIRST TO THE LAST LUG
AND GET THE OTHER ANES AT THEIR OWN HEIGHT AGAINST THE LINE.

NOTAS:

EL N° DE IDENTIFICACION DE LA TORRE DEBERA SOLDARSE DENTRO DE LA MISMA, DETRAS DE LA ESCALERA, EN LA VIROLA 1.

TOLERANCIAS GENERALES, VER INSTRUCCION DE CONTROL 923418.

TODAS LAS SOLDADURAS DE BRIDAS, VIROLAS, MARCO PUERTA, DEBERAN TENER PENETRACION TOTAL Y SOLDADURA POR AMBAS CARAS.

SOLDADURA OREJETAS  $a=4 \pm 1$ AL-923952 O AL-923953

CONTROL DE SOLDADURAS 100% NIVEL B SEGUN EN 25817


DIMENSIONES SIN TOLERANCIAS ± 5

NOTES:

No. IDENTIFICATION TOWER SHOULD WELDING INSIDE OF THE TOWER, REAR OF THE STAIR IN FIRST SHELL

MAIN TOLERANCES ACCORDING CHECK INSTRUCTIONS 923418


ALL WELDING FLANGES SHOULD HAVE TOTAL PENETRATION AND WELDING BY TWO FACES


WELDING LUG  0421AL-923952 OR AL-923953

WELDING CHECKING 100% LEVEL B ACCORDING TO EN 25817

DIMENSIONS WITHOUT TOLERANCES ±5

STATUS DE ULTIMA REVISION		
LAST REVISION STATUS		
DISEÑADO DRAWN	AJR	FECHA DATE 22.01.01
VERIFICADO VERIFIED	JMC	FECHA DATE 24.01.01
APROBADO	JILL	FECHA DATE 24.01.01

		TRAMO INTERMEDIO SOLDADO 55m.	
FORMATO A1		DRAWING TITLE SECTION MIDDLE WELDED TOWER 55m.	
PERÍMETRO WEIGHT			
ESCALA	1:40	PLANO Nº	1 082105801 (455900s)
		HOLAS	DE 1

SPECIFICATION	CODE N°	ZONE
 Gamesa Eólica Esta plano no puede ser usado, publicado, ni comunicado a terceros partes o reproducido sin autorización escrita de GAMESA EOLICA. This drawing cannot be used, published, or communicated to third parties or reproduced without written authorization of GAMESA EOLICA.		

H

NOTA/NOTE:

EL CABLE DE ALUMBRADO SOBRESALDRA 3.5m DE LA BRIDA INFERIOR PARA LLEGAR A LA LUMINARIA DEL TRAMO INFERIOR. THE LIGHT CABLE MUST BE 3.5m. OUTER FROM THE BOTTOM FLANGE IN ORDER TO ENGAGE TO THE BOTTOM SECTION LIGHTS.

TODAS LAS DIMENSIONES SIN TOLERANCIA ± 2
ALL DIMENSIONS WITHOUT TOLERANCES ± 2



SECCION/SECTION B-B
ESCALA/SCALE 1:25

H

TOL. LINEALES Y ANG. SEGUN ANGLE AND LINEAR TOL. TO			
TOL. GEOMETRICAS SEGUN GEOMETRY TOL. TO			
MATERIAL MATERIAL	DESIGNATION NAME		G
	ESPECIFICATION SPECIFICATION		
DELINEACION DE ACUERDO A DRAWING PRACTICE TO		PI-100	
ESPECIFICATION SPECIFICATION		CODE/GO CODE IN	ZONA ZONE

Gamesa Eólica
 Este plano no puede ser usado, publicado, ni comunicado a terceras partes
 o reproducido sin autorización escrita de GAMESA EOLICA.
 This drawing cannot be used, published, nor communicated to third parties
 or reproduced without written authorization of GAMESA EOLICA.

TITULO PLANO


TRAMO INTERMEDIO TORRE 55m CONJUNTO

DRAWING TITLE

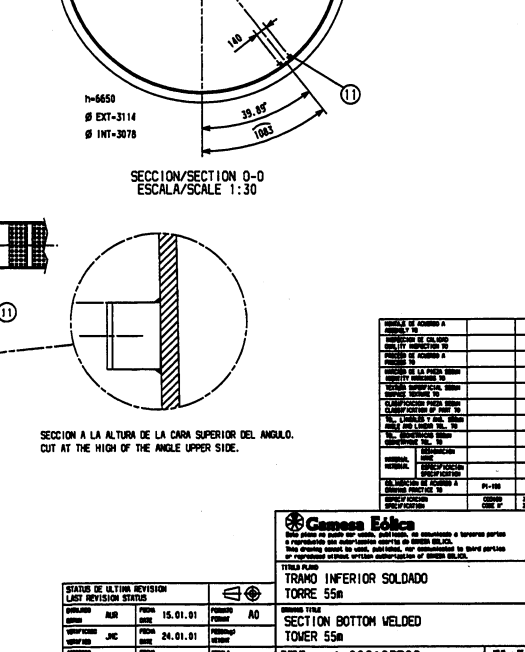
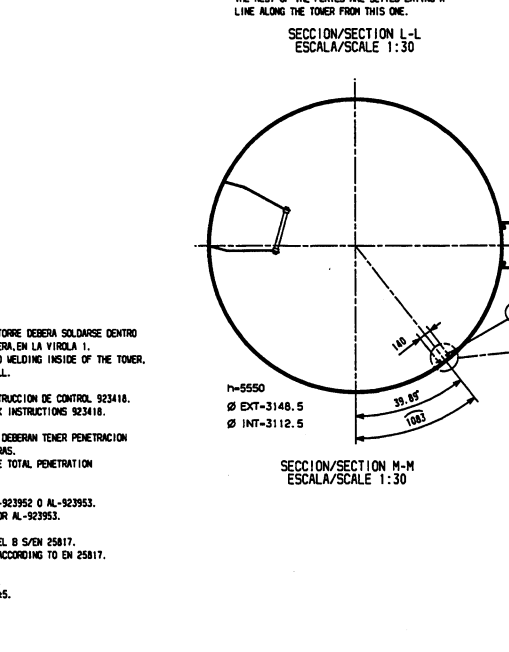
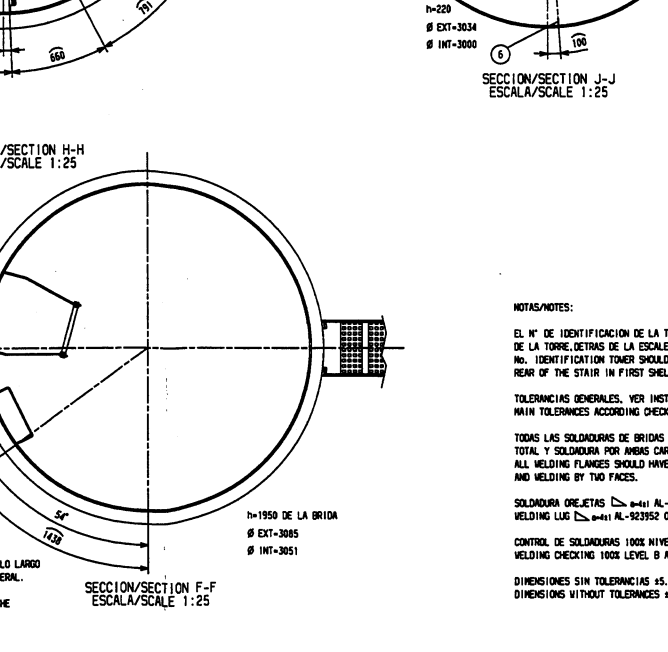
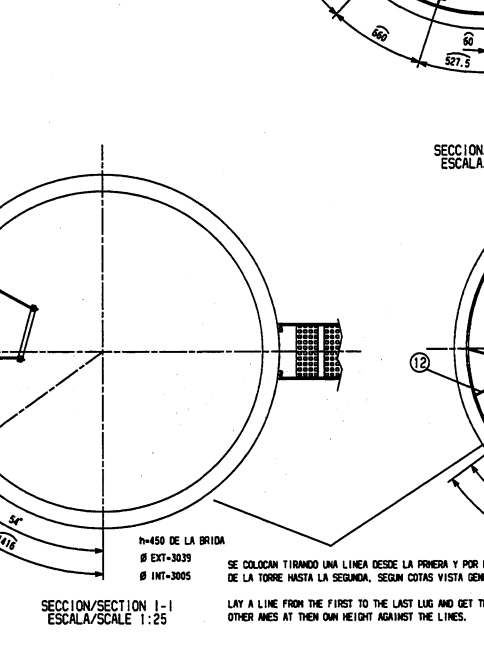
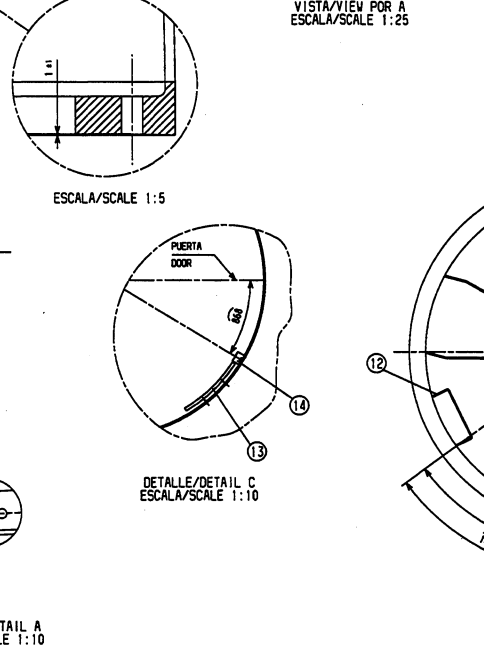
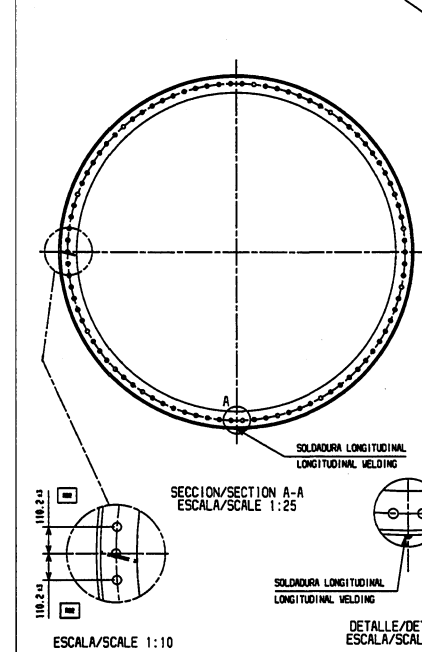
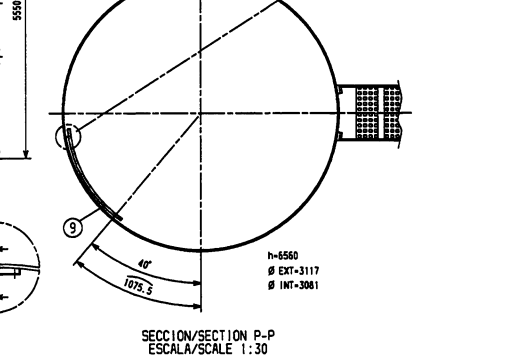
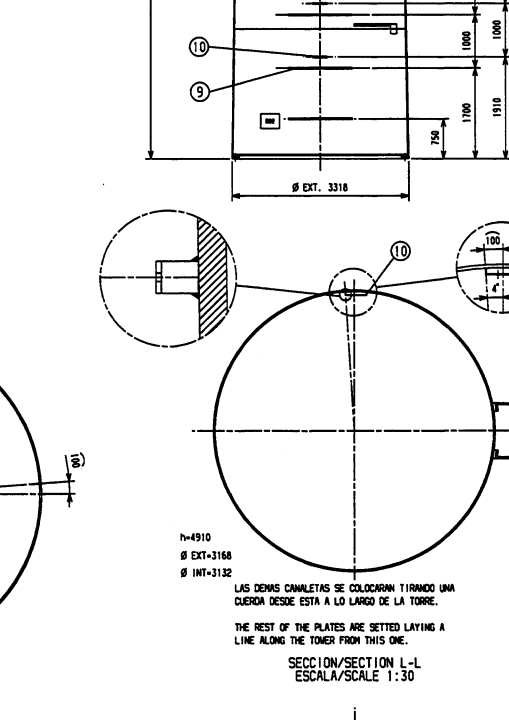
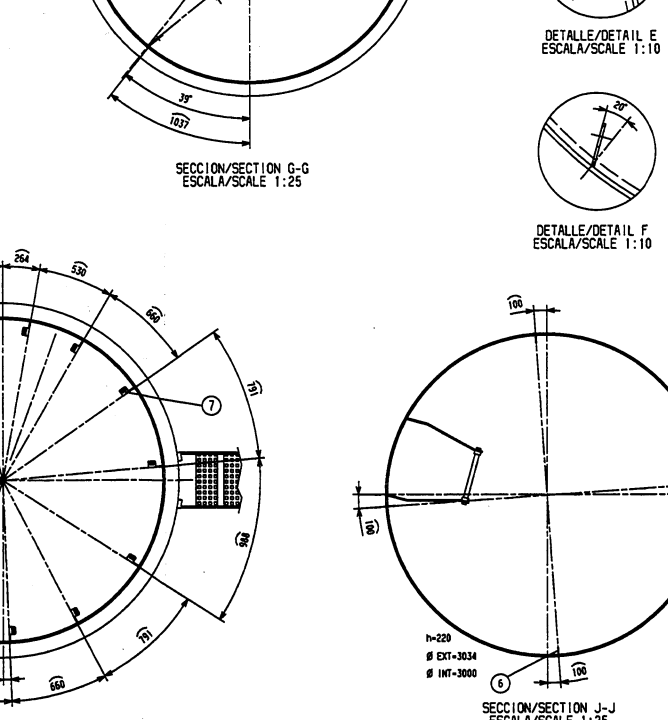
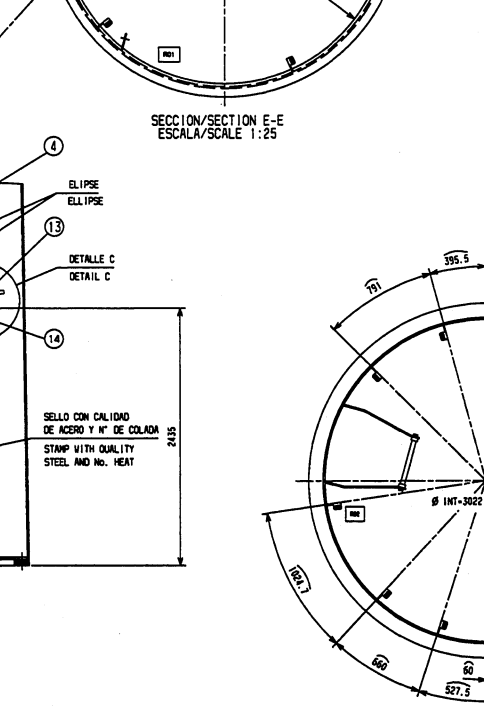
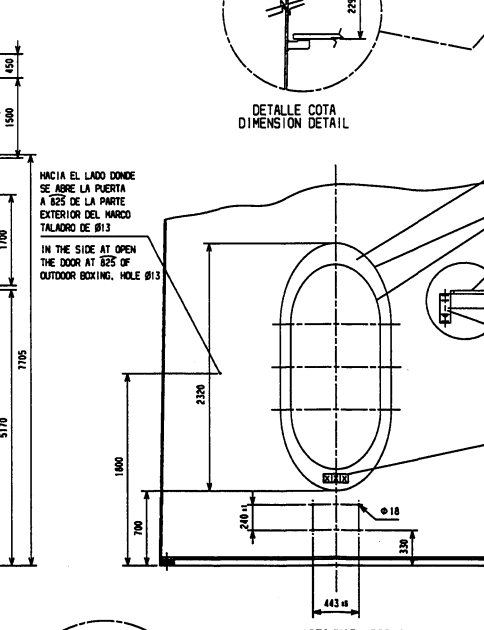
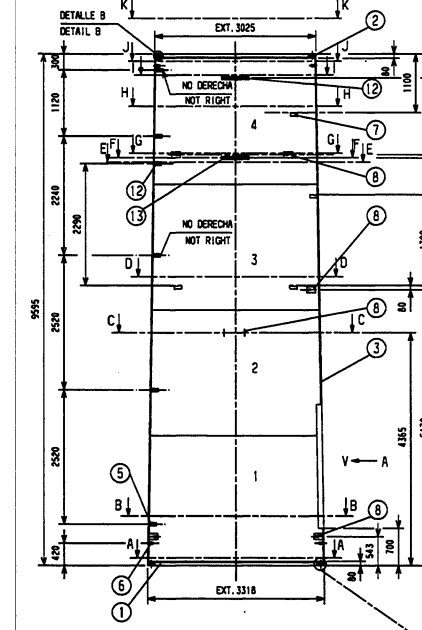
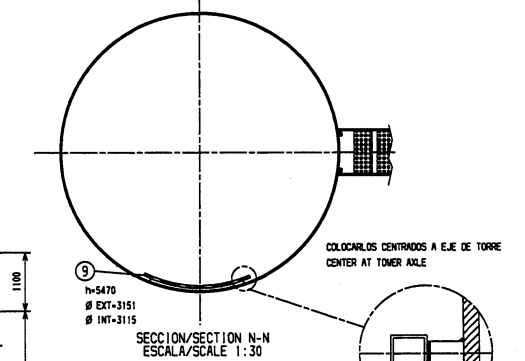
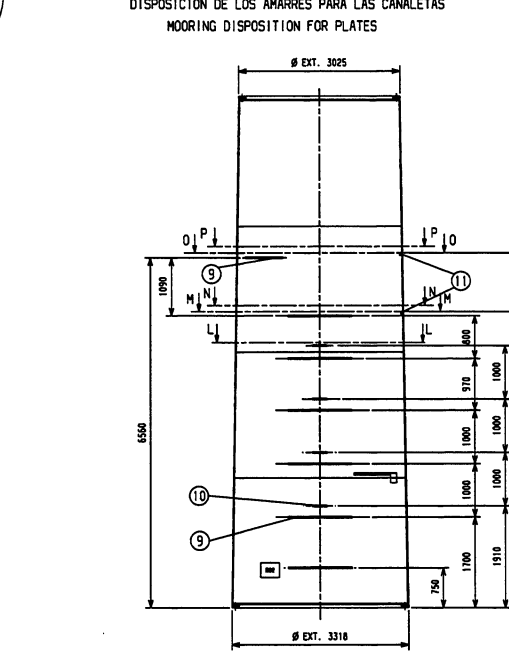
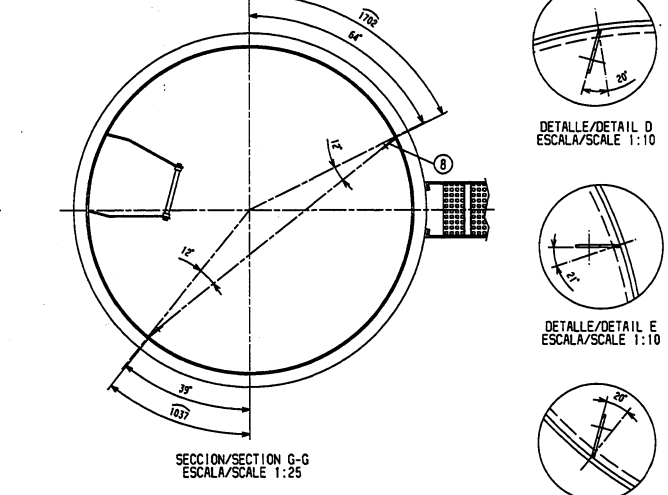
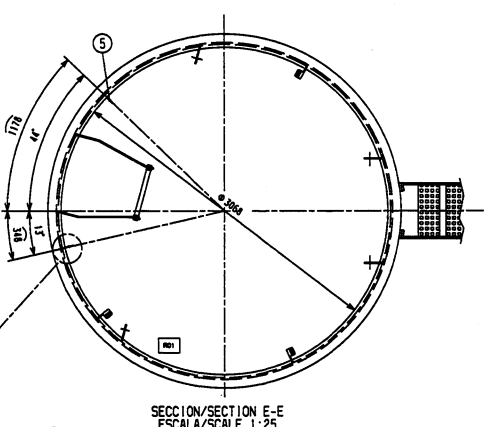
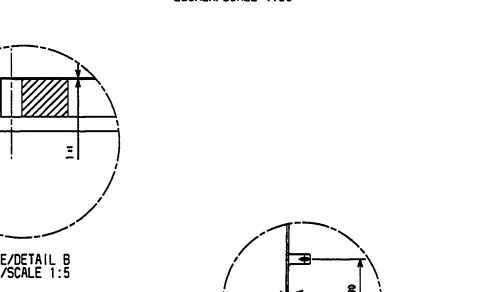
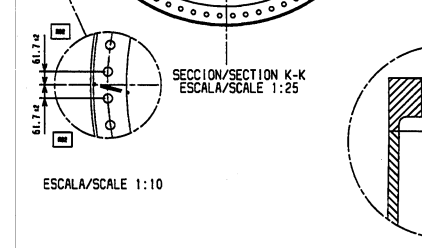
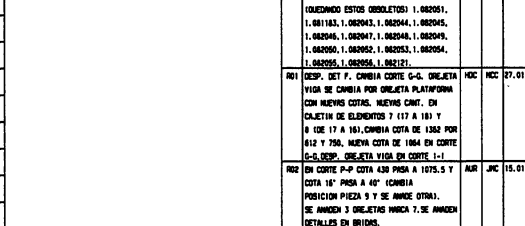
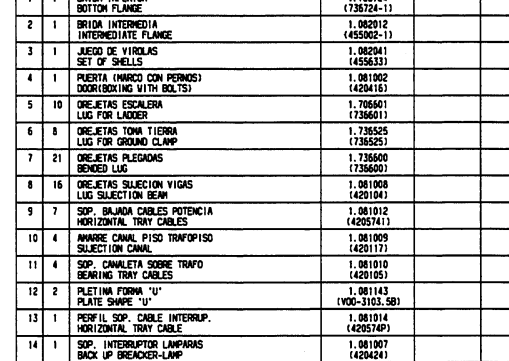
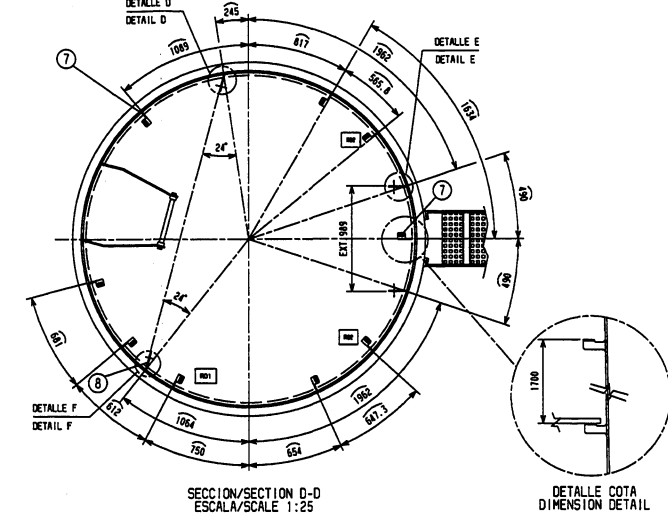
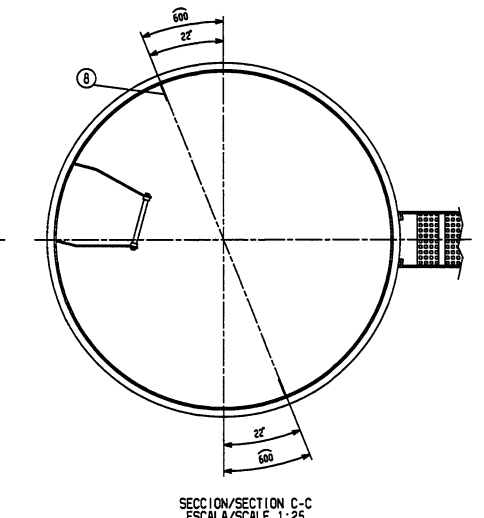
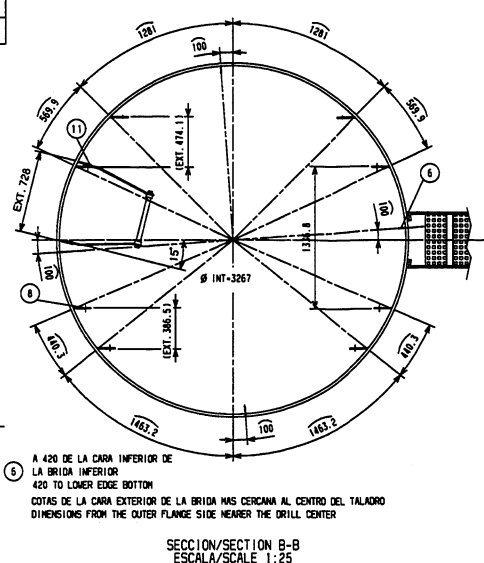
SECTION MIDDLE ASSEMBLY TOWER 55m.

PLANO N°	1.082106R02 (455900M)
DRUG No.	

NOJA	1	DE	1
SHEET		OF	

STATUS DE ULTIMA REVISION LAST REVISION STATUS			
DIBUJADO DRAWN	AUR	FECHA DATE	23.01.01
FORMATO FORMAT	A2		
VERIFICADO VERIFIED	JMC	FECHA DATE	24.01.01
PESO(kg) WEIGHT			
APROBADO APPROVEN	JILL	FECHA DATE	24.01.01
ESCALA SCALE	1:60		

Nº	UNITS	DESCRIPTION	Nº PLANO O ESTÁNDAR	ESPEC. MATERIAL	PRECIO
Nº	UNITS	DESCRIPTION	Nº PLANO O ESTÁNDAR	ESPEC. MATERIAL	PRECIO
1	1	BRIDA INFERIOR BOTTOM FLANGE	1.736724 (736724-1)		
2	1	BRIDA INTERMEDIA INTERMEDIATE FLANGE	1.062012 (455902-1)		
3	1	JUNTO DE VIGAS JOINT OF BEAMS	1.062041 (455633)		
4	1	PUERTA (MARCO CON PERNOS) DOOR (BOXING WITH BOLTS)	1.061002 (429416)		
5	10	OREJETAS ESCALERA LUG FOR LADDER	1.736601		
6	8	OREJETAS TIERRA LUG FOR GROUND CLAMP	1.736525 (736525)		
7	21	OREJETAS PLEGADAS BENDED LUG	1.736600 (736600)		
8	16	OREJETAS SUELECCION VIGAS LUG SUELECCION BEAM	1.061008 (429104)		
9	7	SOP. BALANZA CABLES ROTENCIA HORIZONTAL TRAY CABLES	1.061012 (429574)		



EL N° DE IDENTIFICACION DE LA TORRE DEBERA SOLARSE DENTRO
DE LA TORRE, DETRAS DE LA ESCALERA, EN LA VIGILA 1.
NO IDENTIFICATION TOWER SHOULD WELD INSIDE OF THE TOWER.
REAR OF THE STAIR IN FIRST SHELL.


TOLERANCIAS GENERALES. VER INSTRUCCION DE CONTROL 923410.
MAIN TOLERANCES ACCORDING CHECK INSTRUCTIONS 923410.

TODAS LAS SOLDADURAS DE BRIDAS DEBERAN TENER PENETRACION
TOTAL Y SOLDADURA POR AMBAS CARAS.
ALL WELDING FLANGES SHOULD HAVE TOTAL PENETRATION
AND WELDING BY TWO FACES.

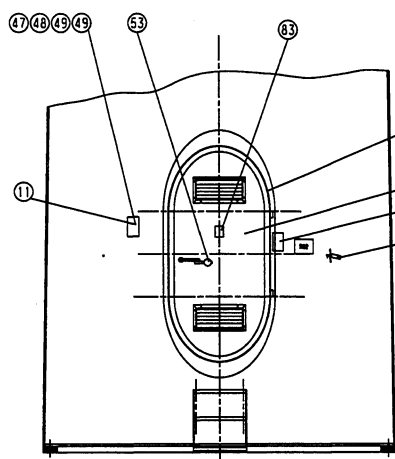
SOLDADURA OJETAS $\frac{1}{4}$ - $\frac{1}{4}$ 01-923952 O AL-923953.
WELDING LUG $\frac{1}{4}$ - $\frac{1}{4}$ 01-923952 O AL-923953.

CONTROL DE SOLDADURAS 100% NIVEL B S/EN 25817.
WELDING CHECKING 100% LEVEL B ACCORDING TO EN 25817.

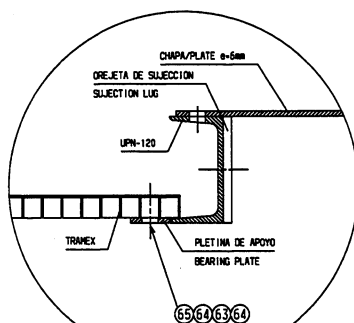
DIMENSIONES SIN TOLERANCIAS ± 5 .
DIMENSIONS WITHOUT TOLERANCES ± 5 .

STATUS DE ULTIMA REVISION LAST REVISION STATUS				TORRE 55m	
DESARROLLO DESIGN	ALIR	FECHA DATE	15.01.01	PERIODO PERIOD	AD
VERIFICACION CHECKED	JNC	FECHA DATE	24.01.01	PERIODO PERIOD	SECTION BOTTOM WELDED TOWER 55m
APROBACION APPROVED	JILL	FECHA DATE	24.01.01	SEÑALA SIGNATURE	1:50
				PLANO DE DRAWING NO.	1.082107R02(4556005)
				ESCALA SCALE	1:50

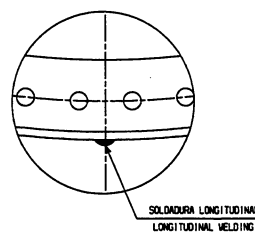
N°	USO	DESCRIPCION DESCRIPTION	N° PLANO O ESTANDAR OWN NO OF STANDARD	ESPEC. MATERIAL MATERIAL SPEC.	PESO WEIGHT	N°	USO	DESCRIPCION DESCRIPTION	N° PLANO O ESTANDAR OWN NO OF STANDARD	ESPEC. MATERIAL MATERIAL SPEC.	PESO WEIGHT	REV.	DESCRIPCION DESCRIPTION	DISCUBRE DISCOVERED	FECHA DATE
47	8	TORNILLO M6x30 SCREW M6x30	1.08106 (157100A)	DIN 933		1	1	ESCALERA LADDER	1.736521 (736521)						
48	24	TUERCA M6 NUT M6	1.081158 (157100B)	DIN 934		2	5	VARILLA ROSCADA M16x530 BOLT ROD M16x530	1.081118 (153249)	DIN 975					
49	24	ARANDOLA M6 WASHER M6	1.081159 (157100C)	DIN 125		3	7	SUJECION ESCALERA LADDER SLECTION	1.736538 (736538)						
50	16	SUJECION BANDEJA TRAY SLECTION	1.081085 116666			4	1	TIRANTE ESCALERA BRACE LADDER	1.736539 (736539)						
51	1	JUNTA DE CUNA (RET. PUERTA) RUBBER JOINT FUSE	1.081212			5	1	SOPORTE PLUMBERCENTE SUPPORT FOR LAMP	1.736463 (736463)						
52	1	ARANDOLA NYLON (RET. PUERTA) NYLON WASHER DOOR FUSER	1.081213 (420303-1)	DIN 933		6	1	ORC. S. SULETA CABLE SALVA C. LAMP SAVE CABLE	1.736511 (736511)						
53	4	TORNILLO M8x15 SCREW M8x15	1.081080 (1571132)	DIN 933		7	1	CABLE ALUMINIO CABLE LIGHT	1.081161 (420605)						
54	23	TORNILLO AUTOCENTRANTE M10 WASHER M10	1.081152 (155772A)	DIN 905		8	1	ETIQUETA DE ALUMINIO LABEL ALUMINIUM	1.736699 (736699)	ALUMINIO ALUMINIUM					
55	16	ARANDOLA M12 SCREW M12	1.081081 (157504A)	DIN 9021		9	1	PUERTA DOOR	1.081018 (420411A)						



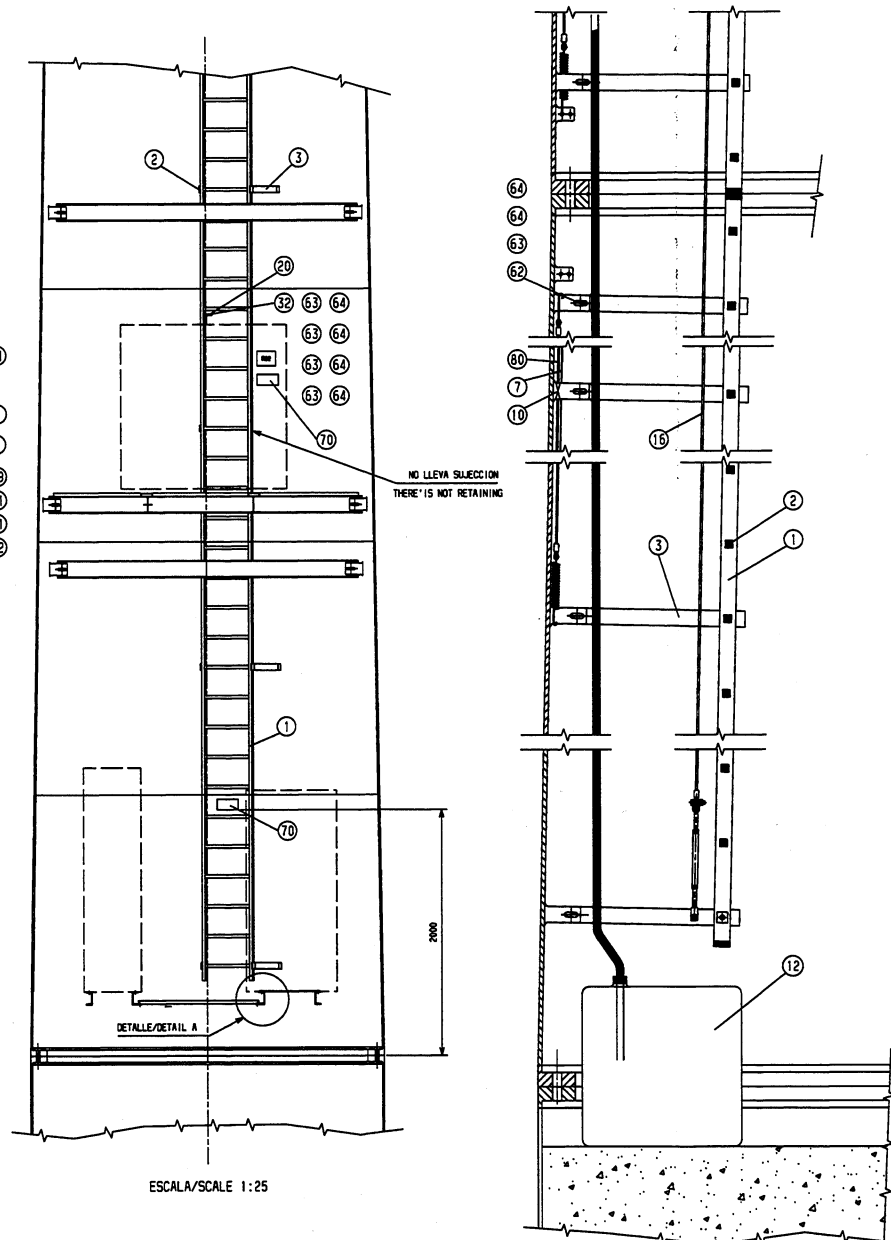
ESCALA/SCALE 1:25



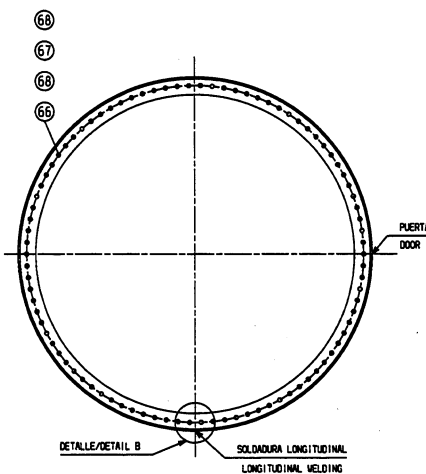
DETALLE/DETAIL A
ESCALA/SCALE 1:10



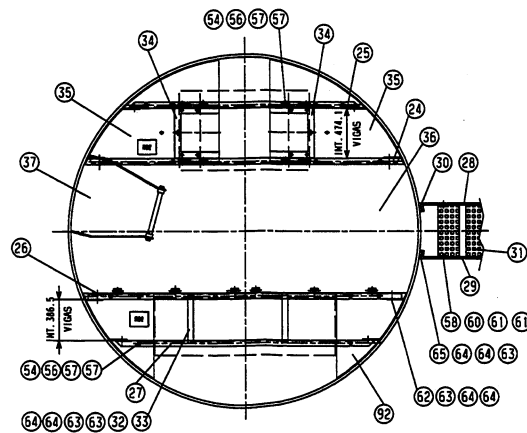
DETALLE/DETAIL B
ESCALA/SCALE 1:10



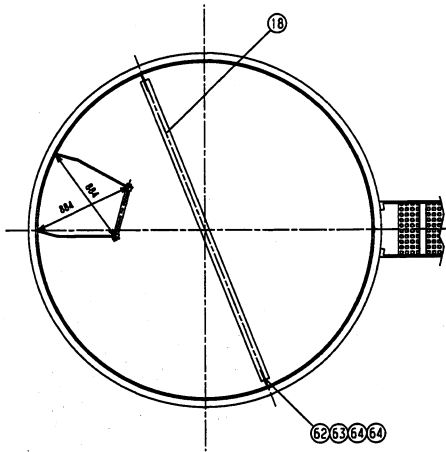
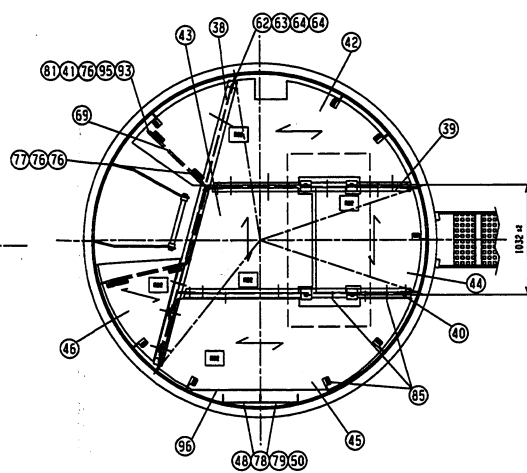
ESCALA/SCALE 1:25



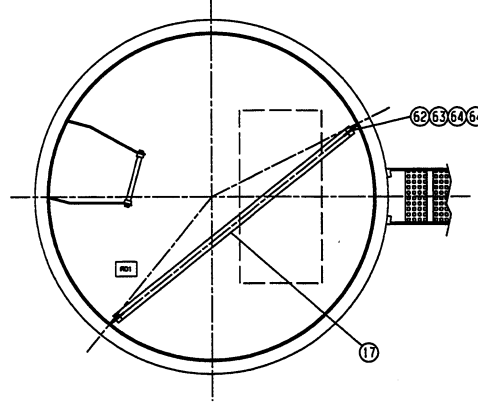
SECTION/SECTION A-A
ESCALA/SCALE 1:25



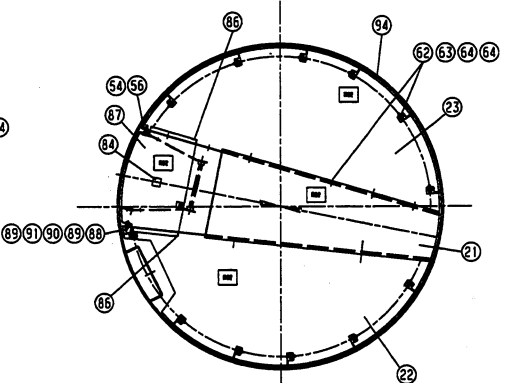
SECTION/SECTION 8-B
FSCALE/SCALE 1:25

SECTION/SECTION C-C
FSCALE/SCALE 1:25


SECTION/SECTION D-D
 ESCALA/SCALE 1:25




SECTION/SECTION E-E
ESCALA/SCALE 1:25



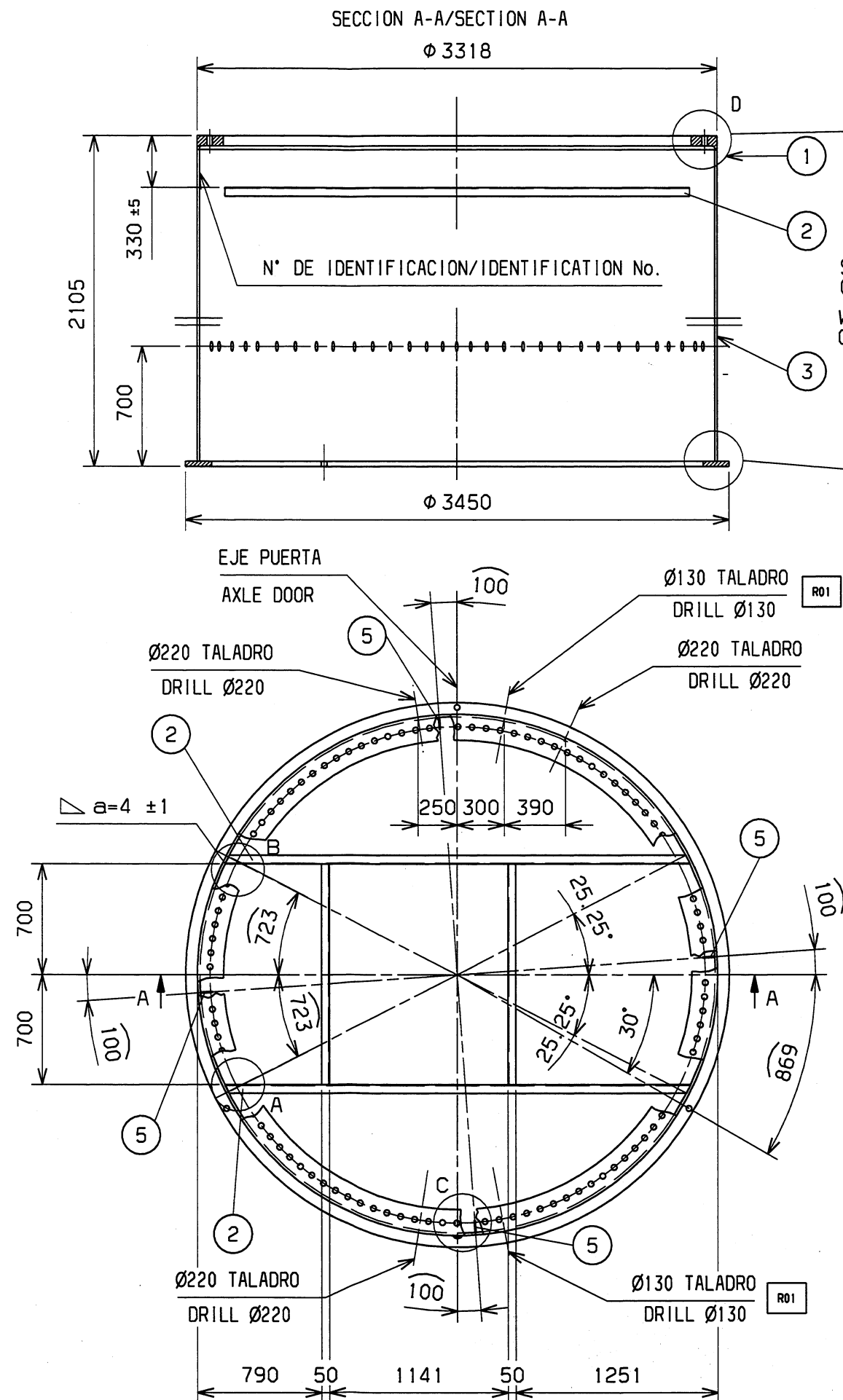
SECTION/SECTION F-F
ESCALA/SCALE 1:25

STATUS OF ULTIMA REVISION LAST REVISION STATUS				TRAMO INFERIOR CONJUNTO TORRE 55m.	
DESARROLLADO POR	ALR	FECHA	23.01.01	PROYECTO	AD
VERIFICADO POR	JMC	FECHA	24.01.01	PROYECTO	
APROBADO POR		FECHA		PROYECTO	
VERIFICADO POR	JLL	FECHA	24.01.01	SEALA	1:50
				PLANO N°	1.082108R02 (455600H)
				FECHA DE IMPRIMIR	01/02/2001

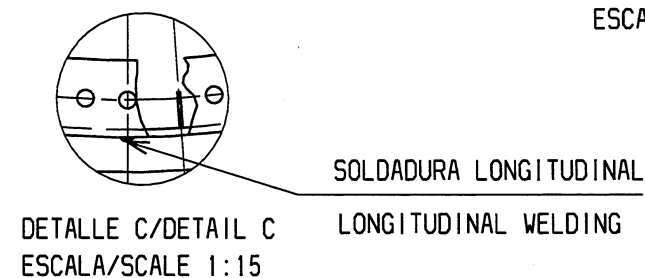
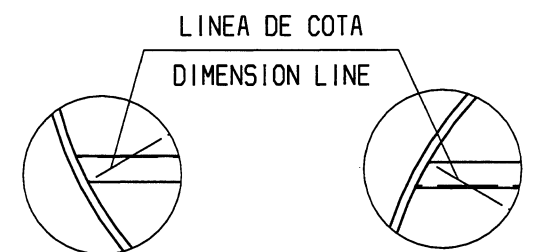
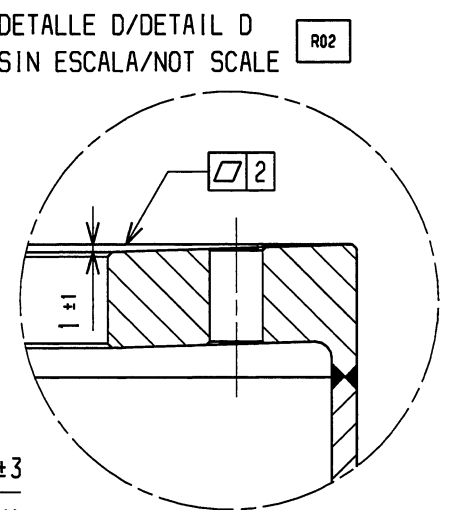
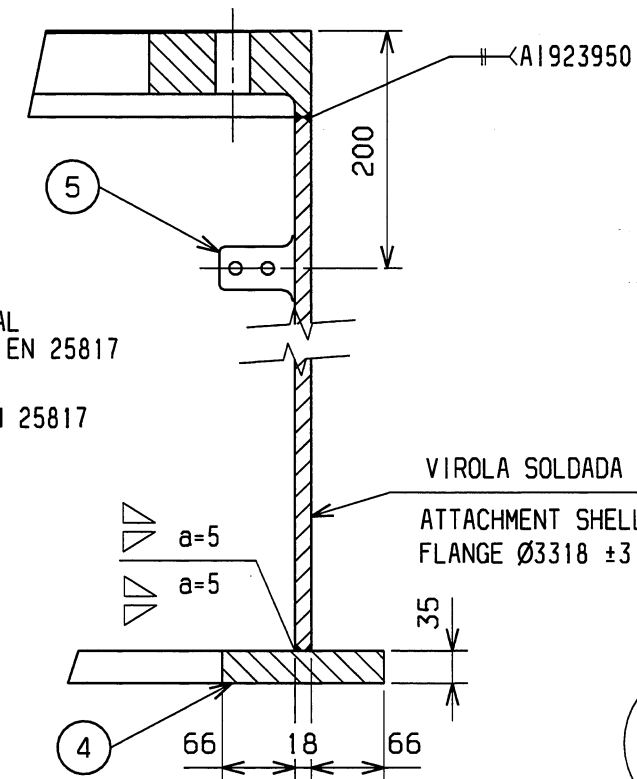
TODAS LAS DIMENSIONES SIN TOLERANCIAS ± 2
ALL DIMENSIONS WITHOUT TOLERANCES ± 2

 **Gama Eólica**
Este plano no pode ser usado, publicado, ou transmitido a terceiros partes e reproduzido sem autorização escrita de BONES B.L.C.I.
This drawing cannot be used, published, or communicated to third parties or reproduced without written authorization of BONES B.L.C.I.

TRAMO INFERIOR CONJUNTO TORRE 55m.



SOLDADURA: PENETRACION TOTAL
CONTROL: 100% NIVEL B IHT. EN 25817
WELDING: TOTAL PENETRATION
CHECK: 100% LEVEL B IHT. EN 25817



No. IDENTIFICACION SOLDAR EN LADO OPUESTO DE LA PUERTA A 150mm DE LA BRIDA SUPERIOR
WELDING No. IDENTIFICATION IN OPPOSITE SIDE DOOR AT 150mm. OF UPER FLANGE

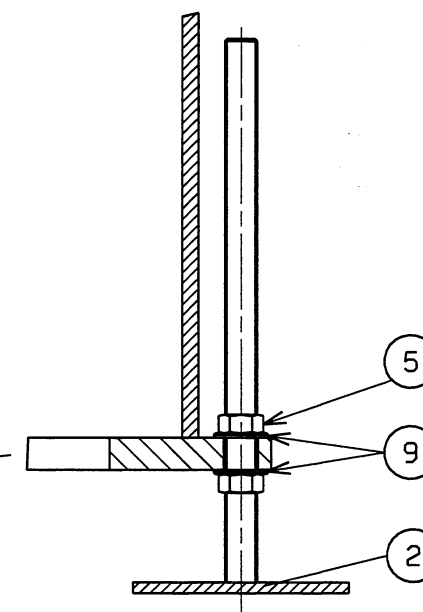
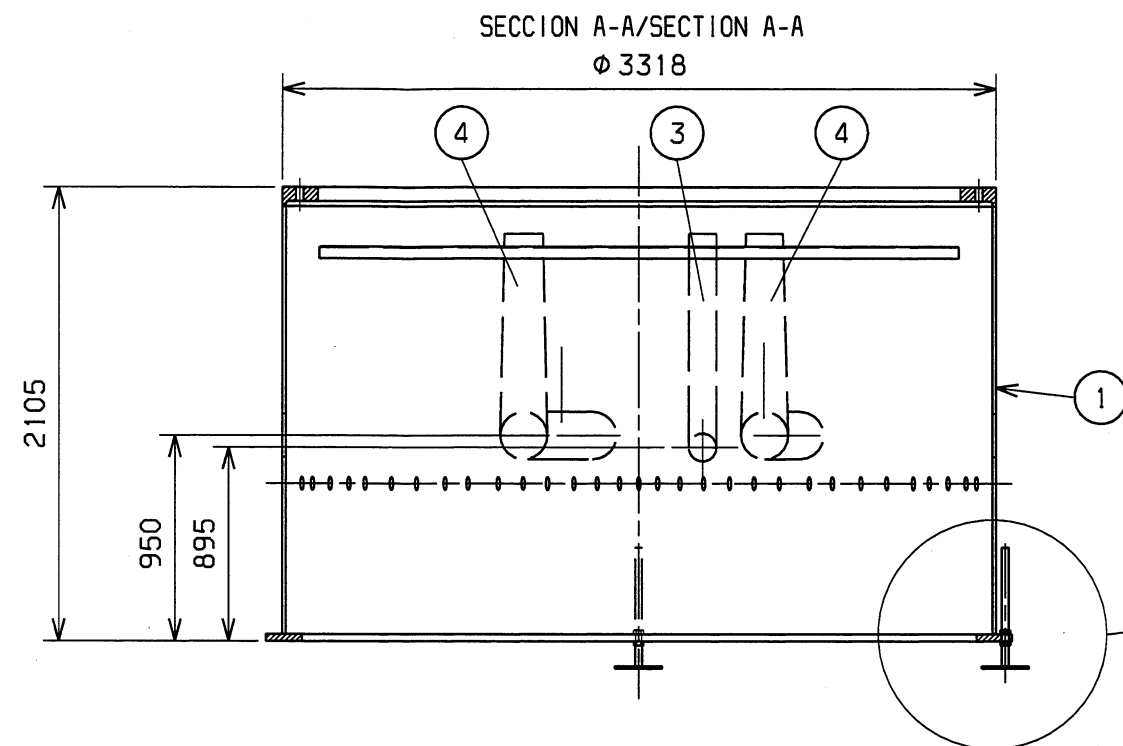
5	4	OREJETA MASA MASS LUG	1.736525 (736525)			
4	1	BRIDA Ø3450 FLANGE Ø3450	1.736505 (736505-1)			
3	1	VIOLA Ø3318 BUSH Ø3318	1.082031 (455509)			
2	1	ANGULAR ANGLE BAR	1.082030 (455514)			
1	1	BRIDA Ø3318 MASS LUG	1.736724 (736724-1)			
N° No	UNIDS. UNITS	DENOMINACION DENOMINATION	REFERENCIA ITEM	MATERIAL MATERIAL	NORMA STANDARD	PESO WEIGHT

FECHA REV. REV DATE	DIBDO. SIGN.	RVDO. REV.	APDO. APVED.	TITULO PLANO TRAMO DE CIMENTACION SOLDADO PARA TORRE 55 m Ø3318
10.11.00	HDC	CDC	JBE	
FECHA DATE	DIBDO. SIGN.	RVDO. REV.	APDO. APVED.	DRAWING TITLE STRUCTURE FUNDATION STUB FOR TOWER 55 m Ø3318
14.04.00	AUR	CDC	JILL	
MATERIAL MATERIAL			PESO (kg) WEIGHT	

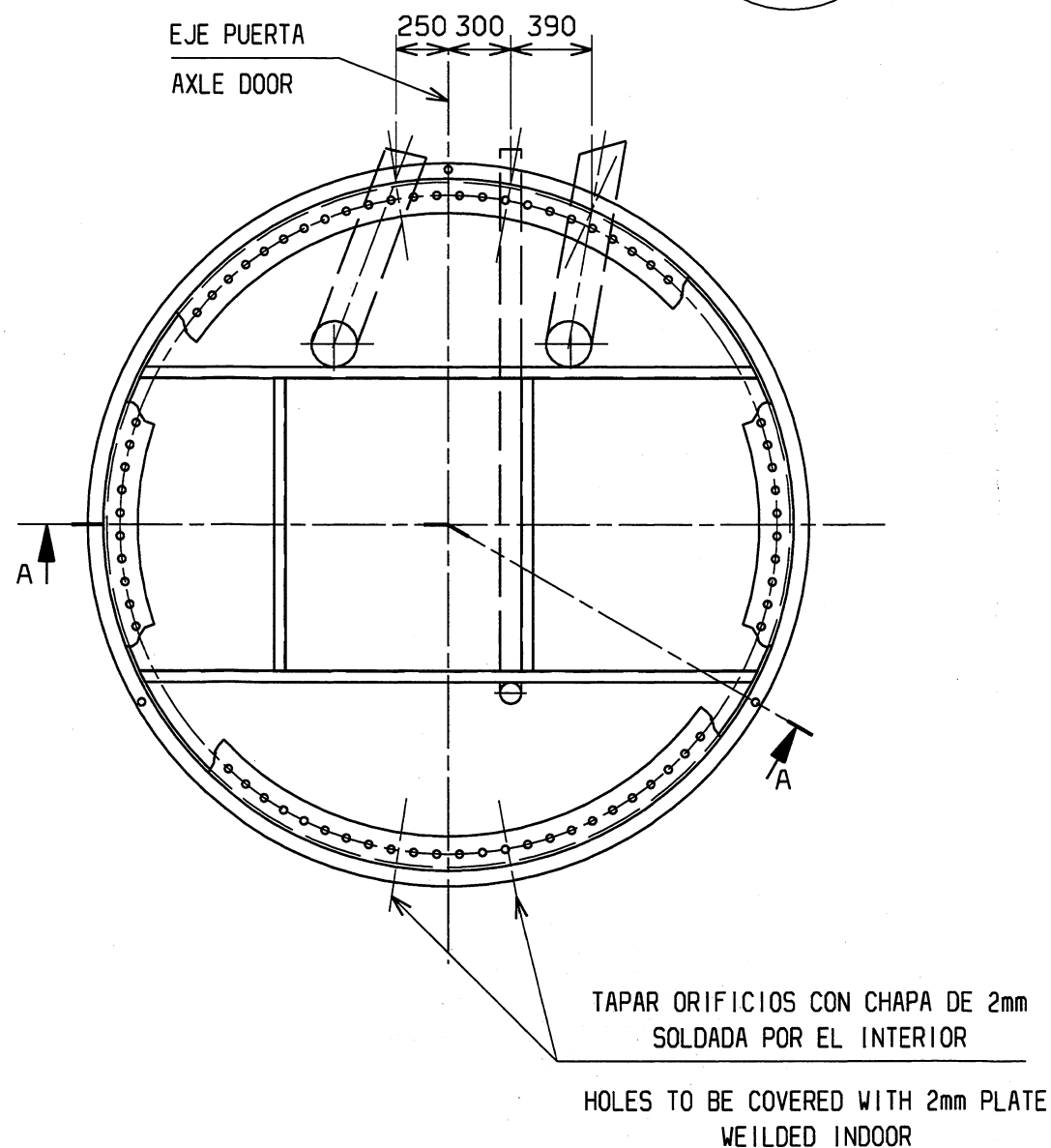
	FORMATO FORMAT	ESCALA SCALE	DIBUJO N° DRWG No.	REV. REV.
Gamesa Eólica S.A. Polígono Industrial Agustinos s/n 31013 Pamplona - Navarra Tlf. +34 948309010 - Fax +34 948309009	A3	1:35	1.082109	2

TODAS LAS DIMENSIONES SIN TOLERANCIAS ±2
ALL DIMENSIONS WITHOUT TOLERANCES ±2

HDC	CDC	JBE	10.11.00	R02	NUOVO DETALLE D. CAMBIA TOLERANCIA COTA 110,-1) PASA A 1:1.	2
HDC	MGP	KMA	14.07.00	R01	AGUJERO DE Ø110 PASA A Ø130.	1
DIBDO.	RVDO.	APDO.	FECHA	REV.	No. CAMBIOS:	



MONTAJE EN CAMPO
PARA TRANSPORTE SIN PATAS
ASSEMBLING IN WIND FARM
FOR TRANSPORT WITHOUT FATES

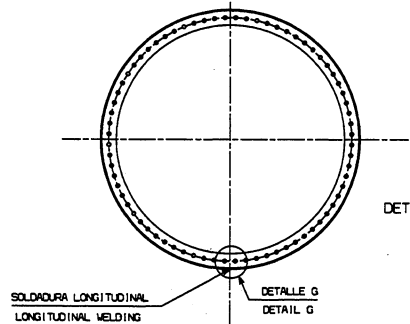
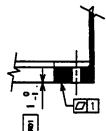
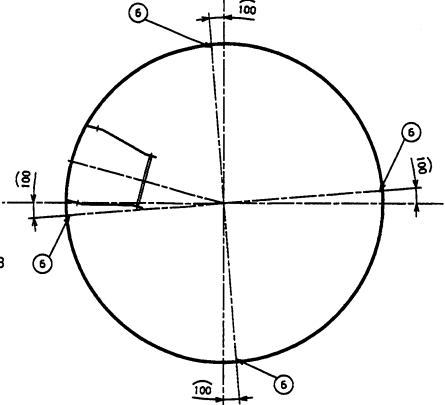
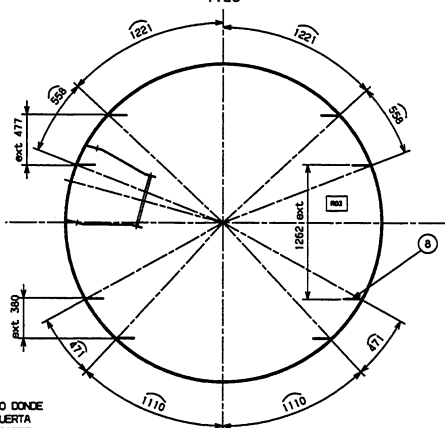


9	6	ARANDELA M30 WASHER M30	155761		DIN 125	
8	8	ARANDELA M8 WASHER M8	152365		DIN 125	
7	4	TUERCA M8 NUT M8	152364A		DIN 934	
6	4	TORNILLO DE MASA M8x25 MASS SCREW M8x25	152363		DIN 933	
5	6	TUERCA M30 NUT M30	1.081119 (157117)	8 FZB	DIN 934	
4	2	TUBO Ø220 L=2300 MAX. BEND PIPE Ø200	1.736512 (736512)			
3	1	TUBO Ø110 L=4000 MAX. BEND PIPE Ø110	1.081117 (420513)			
2	3	PERNO NIVELACION NIVELATION BOLT ROD	1.736400 (736400)			
1	1	VIROLA CIMENTACION FOUNDATION SECTION	1.082031 (455401)			
N° No	UNIDS. UNITS	DENOMINACION DENOMINATION	REFERENCIA ITEM	MATERIAL MATERIAL	NORMA STANDARD	PESO WEIGHT

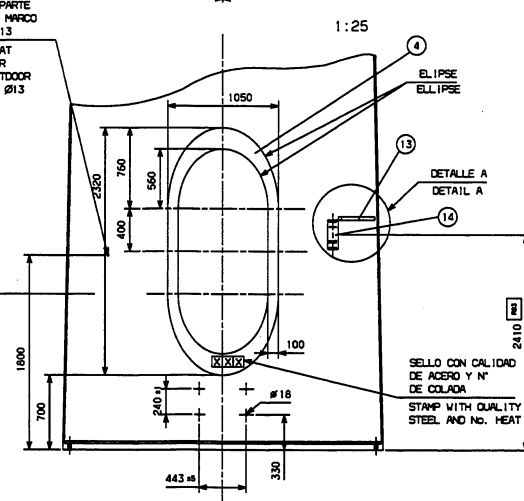
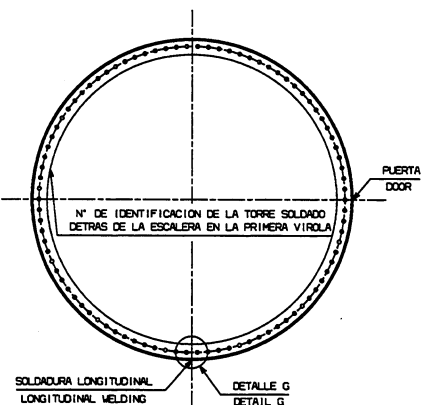
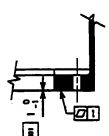
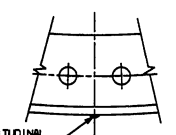
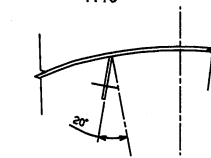
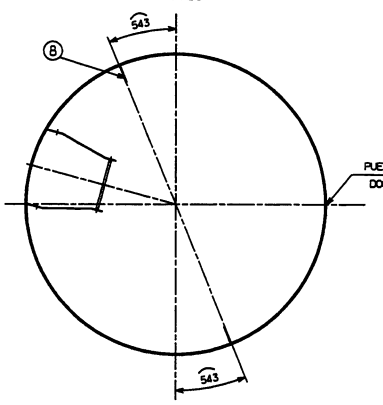
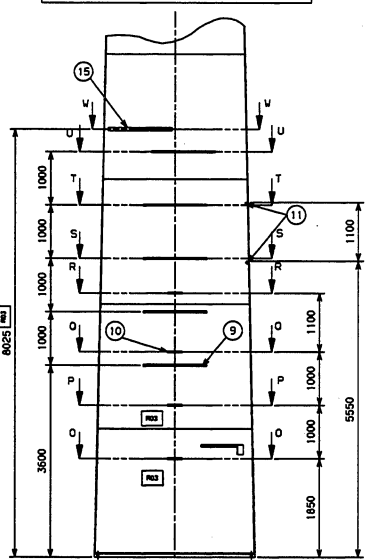
FECHA REV. REV DATE	14.07.00	HDC	MGP	KMA	TITULO PLANO CONJUNTO TRAMO DE CIMENTACION PARA TORRE 55 m Ø3318
FECHA DATE	11.04.00	AUR	CDC	JILL	DRAWING TITLE FOUNDATION STUB FOR TOWER 55 m Ø3318
MATERIAL MATERIAL				PESO (kg) WEIGHT	
Gamesa Eólica Gamesa Eólica S.A. Polígono Industrial Agustinos s/n 31013 Pamplona - Navarra Tlf. +34 948309010 - Fax +34 948309009				FORMATO FORMAT	A3
				ESCALA SCALE	1:35
				DIBUJO N° DRWG No.	1.082110
				REV. REV.	1

TODAS LAS DIMENSIONES SIN TOLERANCIAS ±2
ALL DIMENSIONS WITHOUT TOLERANCES ±2

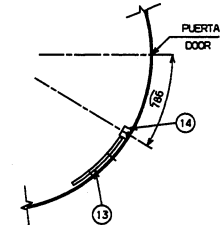
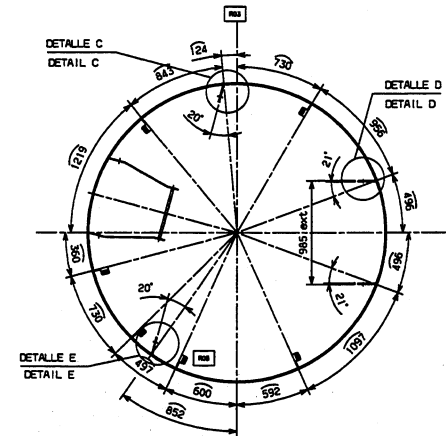
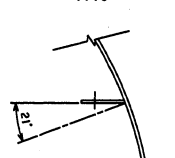
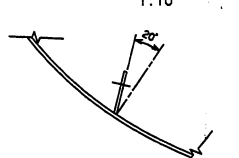
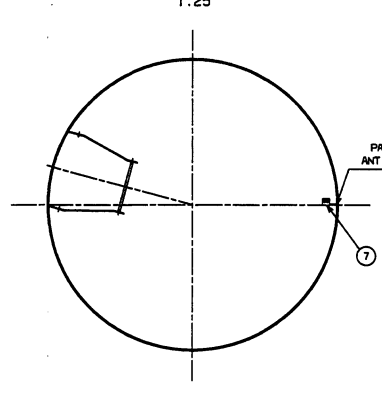
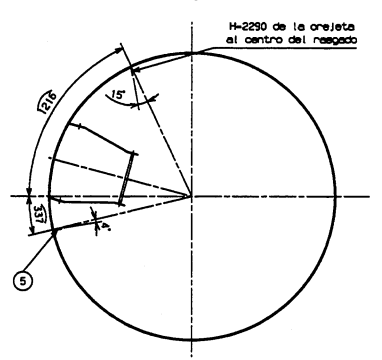
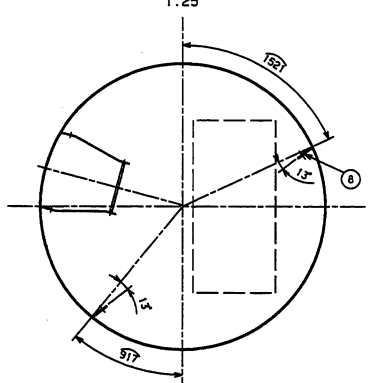
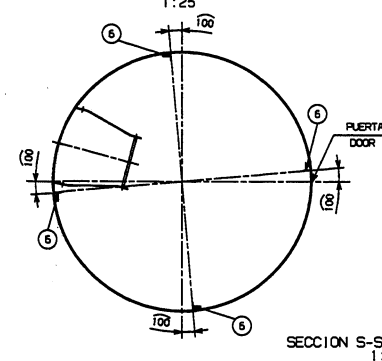
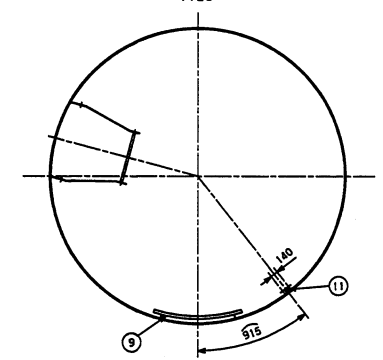
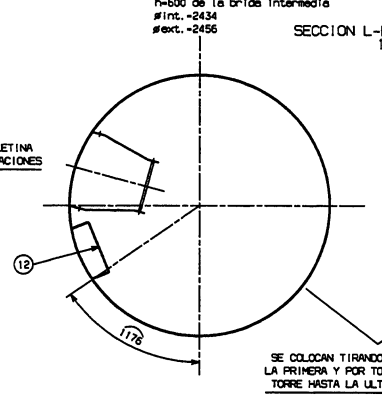
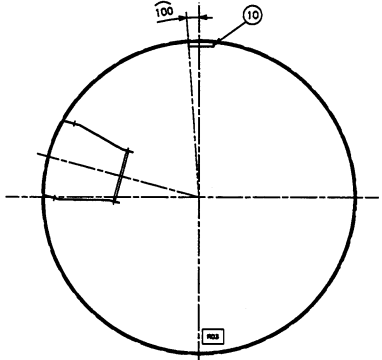
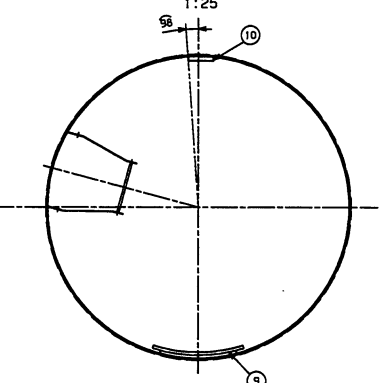
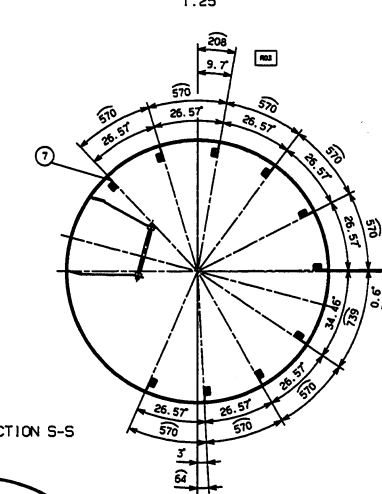
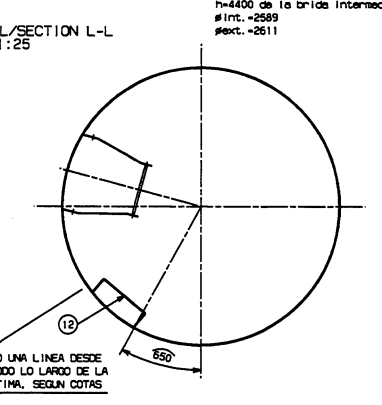
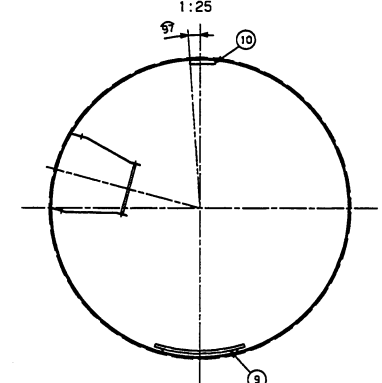
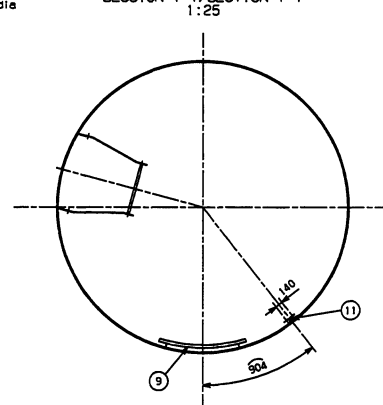
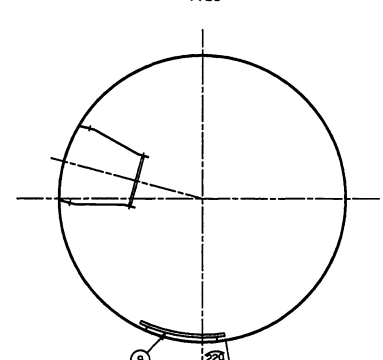
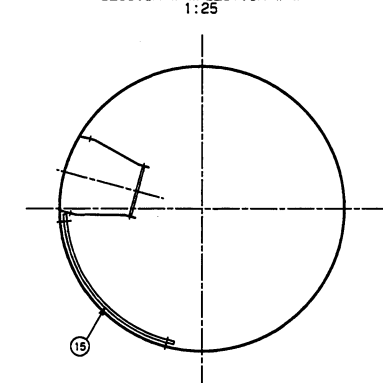
HDC	MGP	KMA	14.07.00	R01	TUBO DE Ø90 PASA A Ø110.	1
DIBDO.	RVDO.	APDO.	FECHA	REV.		No. CAMBIOS:

SECTION B-B/SECTION B-B
1:25DETALLE B/DETAIL B
1:10SECTION C-C/SECTION C-C
1:25SECTION D-D/SECTION D-D
1:25

HACIA EL LADO DONDE SE ABRE LA PUERTA A 50% DE LA PARTE EXTERIOR DEL MARCO TALADRO DE Ø13 IN THE SIDE AT OPEN THE DOOR AT 50% OF OUTDOOR BOXING. HOLE Ø13

SECTION A-A/SECTION A-A
1:25DETALLE B/DETAIL B
1:10DETALLE G/DETAIL G
1:10DETALLE C/DETAIL C
1:10SECTION F-F/SECTION F-F
1:25DISPOSICION DE LOS AMARRS PARA LAS CANALETAS
MOORING DISPOSITION FOR PLATES

DETALLE A/DETAIL A

SECTION G-G/SECTION G-G
1:25DETALLE D/DETAIL D
1:10DETALLE E/DETAIL E
1:10SECTION H-H/SECTION H-H
1:25SECTION J-J/SECTION J-J
1:25SECTION K-K/SECTION K-K
1:25SECTION M-M/SECTION M-M
1:25SECTION S-S/SECTION S-S
1:25SECTION L-L/SECTION L-L
1:25SECTION O-O/SECTION O-O
1:25SECTION Q-Q/SECTION Q-Q
1:25SECTION N-N/SECTION N-N
1:25SECTION P-P/SECTION P-P
1:25SECTION R-R/SECTION R-R
1:25SECTION T-T/SECTION T-T
1:25SECTION U-U/SECTION U-U
1:25SECTION V-V/SECTION V-V
1:25

NOTAS/NOTES:
EL N° DE IDENTIFICACION DE LA TORRE DEBERA SOLDARSE DENTRO DE LA TORRE, DETRAS DE LA ESCALERA, EN LA VIROLA 1
TOLERANCIAS GENERALES, VER INSTRUCCION DE CONTROL 923418
TODAS LAS SOLDADURAS DE BRIDAS, VIROLAS, MARCO PUERTA, DEBERAN TENER PENETRACION TOTAL Y SOLDADURA POR AMBAS CARAS
SOLDADURA OREJETAS AL-923952 O AL-923953
CONTROL DE SOLDADURAS 100% NIVEL B S/EN 25817
DIMENSIONES SIN TOLERANCIAS ±5
LAS COTAS EN ARCOS ESTAN TOMADAS EN REFERENCIA A LA PARED INTERIOR DE LA TORRE

NO IDENTIFICATION TOWER SHOULD WELDING INSIDE OF THE TOWER, REAR OF THE STAIR IN FIRST SHELL
MAIN TOLERANCES ACCORDING CHECK INSTRUCTIONS 923418
ALL WELDING PLAINES, SECTIONS, BOXING SHOULD HAVE TOTAL PENETRATION AND WELDING BY TWO FACES
WELDING LUGS AL-923952 OR AL-923953
WELDING CHECKING 100% LEVEL B ACCORDING TO EN 25817
DIMENSIONS WITHOUT TOLERANCES ±5
THE ARCH DIMENSIONS REF. TOWER INSIDE.

ITEM	DESCRIPTION	QUANTITY	UNIT	PRICE	TOTAL
1	PROCESADOR HORIZONTAL	1.00	1015		
2	PROCESADOR HORIZONTAL	1.00	1015		
3	PROCESADOR HORIZONTAL	1.00	1015		
4	PROCESADOR HORIZONTAL	1.00	1015		
5	PROCESADOR HORIZONTAL	1.00	1015		
6	PROCESADOR HORIZONTAL	1.00	1015		
7	PROCESADOR HORIZONTAL	1.00	1015		
8	PROCESADOR HORIZONTAL	1.00	1015		
9	PROCESADOR HORIZONTAL	1.00	1015		
10	PROCESADOR HORIZONTAL	1.00	1015		
11	PROCESADOR HORIZONTAL	1.00	1015		
12	PROCESADOR HORIZONTAL	1.00	1015		
13	PROCESADOR HORIZONTAL	1.00	1015		
14	PROCESADOR HORIZONTAL	1.00	1015		
15	PROCESADOR HORIZONTAL	1.00	1015		
16	PROCESADOR HORIZONTAL	1.00	1015		
17	PROCESADOR HORIZONTAL	1.00	1015		
18	PROCESADOR HORIZONTAL	1.00	1015		
19	PROCESADOR HORIZONTAL	1.00	1015		
20	PROCESADOR HORIZONTAL	1.00	1015		
21	PROCESADOR HORIZONTAL	1.00	1015		
22	PROCESADOR HORIZONTAL	1.00	1015		
23	PROCESADOR HORIZONTAL	1.00	1015		
24	PROCESADOR HORIZONTAL	1.00	1015		
25	PROCESADOR HORIZONTAL	1.00	1015		
26	PROCESADOR HORIZONTAL	1.00	1015		
27	PROCESADOR HORIZONTAL	1.00	1015		
28	PROCESADOR HORIZONTAL	1.00	1015		
29	PROCESADOR HORIZONTAL	1.00	1015		
30	PROCESADOR HORIZONTAL	1.00	1015		
31	PROCESADOR HORIZONTAL	1.00	1015		
32	PROCESADOR HORIZONTAL	1.00	1015		
33	PROCESADOR HORIZONTAL	1.00	1015		
34	PROCESADOR HORIZONTAL	1.00	1015		
35	PROCESADOR HORIZONTAL	1.00	1015		
36	PROCESADOR HORIZONTAL	1.00	1015		
37	PROCESADOR HORIZONTAL	1.00	1015		
38	PROCESADOR HORIZONTAL	1.00	1015		
39	PROCESADOR HORIZONTAL	1.00	1015		
40	PROCESADOR HORIZONTAL	1.00	1015		
41	PROCESADOR HORIZONTAL	1.00	1015		
42	PROCESADOR HORIZONTAL	1.00	1015		
43	PROCESADOR HORIZONTAL	1.00	1015		
44	PROCESADOR HORIZONTAL	1.00	1015		
45	PROCESADOR HORIZONTAL	1.00	1015		
46	PROCESADOR HORIZONTAL	1.00	1015		
47	PROCESADOR HORIZONTAL	1.00	1015		
48	PROCESADOR HORIZONTAL	1.00	1015		
49	PROCESADOR HORIZONTAL	1.00	1015		
50	PROCESADOR HORIZONTAL	1.00	1015		
51	PROCESADOR HORIZONTAL	1.00	1015		
52	PROCESADOR HORIZONTAL	1.00	1015		
53	PROCESADOR HORIZONTAL	1.00	1015		
54	PROCESADOR HORIZONTAL	1.00	1015		
55	PROCESADOR HORIZONTAL	1.00	1015		
56	PROCESADOR HORIZONTAL	1.00	1015		
57	PROCESADOR HORIZONTAL	1.00	1015		
58	PROCESADOR HORIZONTAL	1.00	1015		
59	PROCESADOR HORIZONTAL	1.00	1015		
60	PROCESADOR HORIZONTAL	1.00	1015		
61	PROCESADOR HORIZONTAL	1.00	1015		
62	PROCESADOR HORIZONTAL	1.00	1015		
63	PROCESADOR HORIZONTAL	1.00	1015		
64	PROCESADOR HORIZONTAL	1.00	1015		
65	PROCESADOR HORIZONTAL	1.00	1015		
66	PROCESADOR HORIZONTAL	1.00	1015		
67	PROCESADOR HORIZONTAL	1.00	1015		
68	PROCESADOR HORIZONTAL	1.00	1015		
69	PROCESADOR HORIZONTAL	1.00	1015		
70	PROCESADOR HORIZONTAL	1.00	1015		
71	PROCESADOR HORIZONTAL	1.00	1015		
72	PROCESADOR HORIZONTAL	1.00	1015		
73	PROCESADOR HORIZONTAL	1.00	1015		
74	PROCESADOR HORIZONTAL	1.00	1015		
75	PROCESADOR HORIZONTAL	1.00	1015		
76	PROCESADOR HORIZONTAL	1.00	1015		
77	PROCESADOR HORIZONTAL	1.00	1015		
78	PROCESADOR HORIZONTAL	1.00	1015		
79	PROCESADOR HORIZONTAL	1.00	1015		
80	PROCESADOR HORIZONTAL	1.00	1015		
81	PROCESADOR HORIZONTAL	1.00	1015		
82	PROCESADOR HORIZONTAL	1.00	1015		
83	PROCESADOR HORIZONTAL	1.00	1015		
84	PROCESADOR HORIZONTAL	1.00	1015		
85	PROCESADOR HORIZONTAL	1.00	1015		
86	PROCESADOR HORIZONTAL	1.00	1015		
87	PROCESADOR HORIZONTAL	1.00	1015		
88	PROCESADOR HORIZONTAL	1.00	1015		
89	PROCESADOR HORIZONTAL	1.00	1015		
90	PROCESADOR HORIZONTAL	1.00	1015		
91	PROCESADOR HORIZONTAL	1.00	1015		
92	PROCESADOR HORIZONTAL	1.00	1015		
93	PROCESADOR HORIZONTAL	1.00	1015		
94	PROCESADOR HORIZONTAL	1.00	1015		
95	PROCESADOR HORIZONTAL	1.00	1015		
96	PROCESADOR HORIZONTAL	1.00	1015		
97	PROCESADOR HORIZONTAL	1.00	1015		
98	PROCESADOR HORIZONTAL	1.00	1015		
99	PROCESADOR HORIZONTAL	1.00	1015		
100	PROCESADOR HORIZONTAL	1.00	1015		